



ELECTRONIC COPY

Report verification at igi.org



June 25, 2025
 IGI Report Number
 Description **LABORATORY GROWN DIAMOND**
 Shape and Cutting Style **PEAR BRILLIANT**
 Measurements **12.59 X 7.82 X 4.88 MM**
GRADING RESULTS
 Carat Weight **3.00 CARATS**
 Color Grade **FANCY INTENSE BROWNISH PINK**
 Clarity Grade **VS 2**

June 25, 2025
 IGI Report Number
 Description **LABORATORY GROWN DIAMOND**
 Shape and Cutting Style **PEAR BRILLIANT**
 Measurements **12.59 X 7.82 X 4.88 MM**

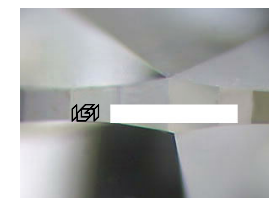
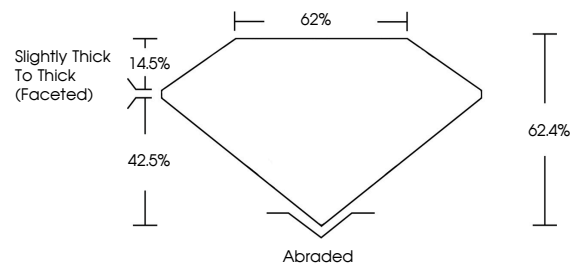
GRADING RESULTS
 Carat Weight **3.00 CARATS**
 Color Grade **FANCY INTENSE BROWNISH PINK**
 Clarity Grade **VS 2**

ADDITIONAL GRADING INFORMATION
 Polish **GOOD**
 Symmetry **EXCELLENT**
 Fluorescence **STRONG**

Inscription(s)

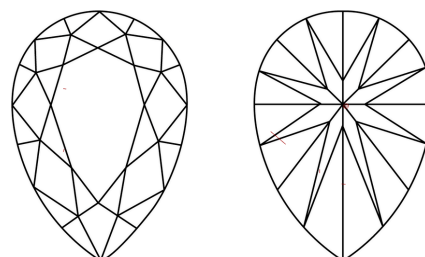
Comments: This Laboratory Grown Diamond was created by Chemical Vapor Deposition (CVD) growth process. Indications of post-growth treatment.

PROPORTIONS



Sample Image Used

CLARITY CHARACTERISTICS



KEY TO SYMBOLS

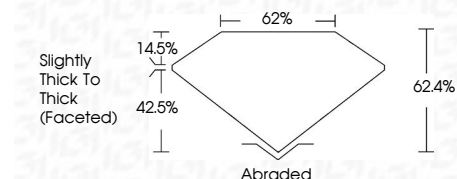
Red symbols indicate internal characteristics. Green symbols indicate external characteristics.

COLOR

D E F G H I J Faint Very Light Light

CLARITY

IF	VS ¹⁻²	VS ¹⁻²	SI ¹⁻²	I ¹⁻³
Internally Flawless	Very Very Slightly Included	Very Slightly Included	Slightly Included	Included



ADDITIONAL GRADING INFORMATION

Polish **GOOD**
 Symmetry **EXCELLENT**
 Fluorescence **STRONG**

Inscription(s)
 Comments: This Laboratory Grown Diamond was created by Chemical Vapor Deposition (CVD) growth process. Indications of post-growth treatment.



June 25, 2025
 IGI Report No
PEAR BRILLIANT
 12.59 X 7.82 X 4.88 MM
 Carat Weight **3.00 CARATS**
 Color Grade **FANCY INTENSE BROWNISH PINK**
 Clarity Grade **VS 2**
 Depth **42.5%**
 Table **14.5%**
 Girdle **Slightly Thick To Thick (Faceted)**
 Culet **Abraded**
 Polish **GOOD**
 Symmetry **EXCELLENT**
 Fluorescence **STRONG**
 Inscription(s)

Comments: This Laboratory Grown Diamond was created by Chemical Vapor Deposition (CVD) growth process. Indications of post-growth treatment.