

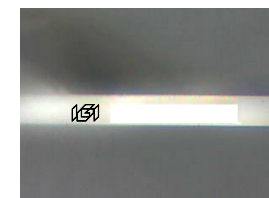
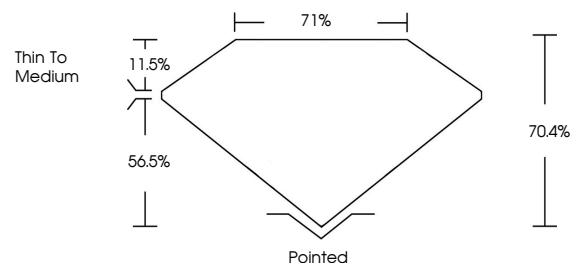


Report verification at igi.org

ELECTRONIC COPY

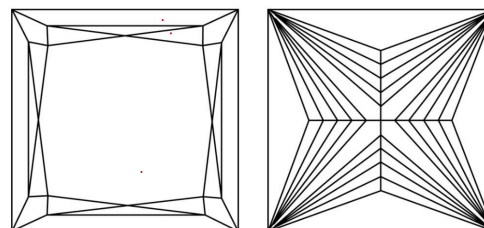
LABORATORY GROWN DIAMOND REPORT

PROPORTIONS



Sample Image Used

CLARITY CHARACTERISTICS



KEY TO SYMBOLS

Red symbols indicate internal characteristics. Green symbols indicate external characteristics.

COLOR

D E F G H I J Faint Very Light Light

CLARITY

IF VS 1-2 VS 1-2 SI 1-2 I 1-3 Internally Flawless Very Very Slightly Included Very Slightly Included Slightly Included Included

September 17, 2025

IGI Report Number

Description LABORATORY GROWN DIAMOND

Shape and Cutting Style PRINCESS CUT

Measurements 7.95 X 7.88 X 5.55 MM

GRADING RESULTS

Carat Weight 3.01 CARATS

Color Grade E

Clarity Grade VVS 2

ADDITIONAL GRADING INFORMATION

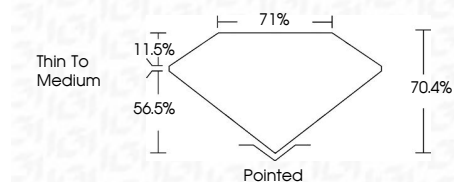
Polish EXCELLENT

Symmetry EXCELLENT

Fluorescence NONE

Inscription(s) IGI

Comments: This Laboratory Grown Diamond was created by Chemical Vapor Deposition (CVD) growth process. Type IIa



September 17, 2025

IGI Report Number

Description LABORATORY GROWN DIAMOND

Shape and Cutting Style PRINCESS CUT

Measurements 7.95 X 7.88 X 5.55 MM

GRADING RESULTS

Carat Weight 3.01 CARATS

Color Grade E

Clarity Grade VVS 2

ADDITIONAL GRADING INFORMATION

Polish EXCELLENT

Symmetry EXCELLENT

Fluorescence NONE

Inscription(s) IGI

Comments: This Laboratory Grown Diamond was created by Chemical Vapor Deposition (CVD) growth process. Type IIa



IGI



© IGI 2020, International Gemological Institute

FD - 10 20

Summary of report details: September 17, 2025, IGI Report No PRINCESS CUT, 7.95 X 7.88 X 5.55 MM, 3.01 CARATS, E, VVS 2, 71%, Thin To Medium, Pointed, EXCELLENT, EXCELLENT, NONE, IGI, Comments: This Laboratory Grown Diamond was created by Chemical Vapor Deposition (CVD) growth process. Type IIa