




ELECTRONIC COPY

LABORATORY GROWN DIAMOND REPORT

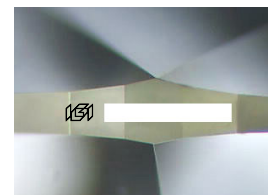
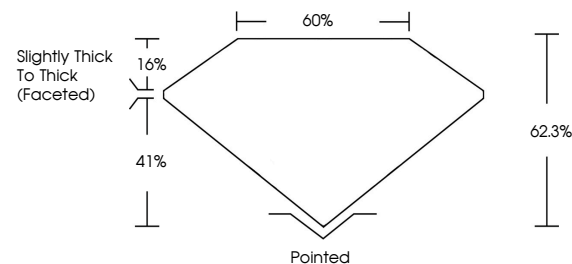
January 17, 2025	
IGI Report Number	
Description	LABORATORY GROWN DIAMOND
Shape and Cutting Style	OVAL BRILLIANT
Measurements	10.41 X 7.21 X 4.49 MM
GRADING RESULTS	
Carat Weight	2.25 CARATS
Color Grade	G
Clarity Grade	VS 1

ADDITIONAL GRADING INFORMATION

Polish	EXCELLENT
Symmetry	EXCELLENT
Fluorescence	NONE
Inscription(s)	
<p>Comments: This Laboratory Grown Diamond was created by Chemical Vapor Deposition (CVD) growth process.</p> <p>Type IIa</p>	

Report verification at igi.org

PROPORTIONS



Sample Image Used

COLOR

D E F G H I J Faint Very Light Light

CLARITY

IF	VS ¹⁻²	VS ¹⁻²	SI ¹⁻²	I ¹⁻³
Internally Flawless	Very Very Slightly Included	Very Slightly Included	Slightly Included	Included

LABORATORY GROWN DIAMOND REPORT

January 17, 2025	
IGI Report Number	
Description	LABORATORY GROWN DIAMOND
Shape and Cutting Style	OVAL BRILLIANT
Measurements	10.41 X 7.21 X 4.49 MM
GRADING RESULTS	
Carat Weight	2.25 CARATS
Color Grade	G
Clarity Grade	VS 1

ADDITIONAL GRADING INFORMATION

Polish	EXCELLENT
Symmetry	EXCELLENT
Fluorescence	NONE
Inscription(s)	1651
<p>Comments: This Laboratory Grown Diamond was created by Chemical Vapor Deposition (CVD) growth process.</p> <p>Type IIa</p>	



January 17, 2025	GI Report No.	2.25 CARATS
GI VALUATION		G
10.01 X 7.51 X 4.49 MM	Carat Weight	VS 1
	Color Grade	62.3%
	Clarity Grade	60%
	Depth	Slightly Thick to Thick (Faceted)
	Table	Pointed
	Girdle	EXCELLENT
	Culet	EXCELLENT
	Polish	NONE
	Symmetry	1691
	Fluorescence	
	Inscription(s)	
Comments: This Laboratory Grown Diamond was created by Chemical Vapor Deposition (CVD) growth process. Type IIa		

