



ELECTRONIC COPY

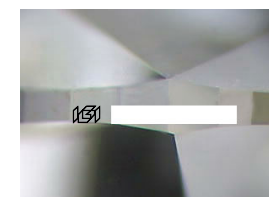
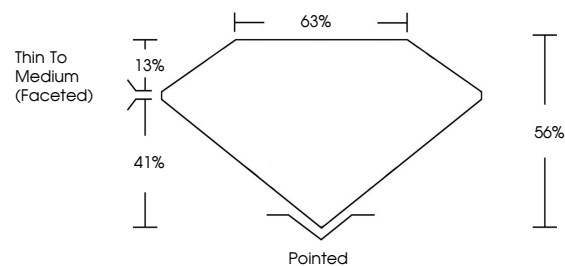
Report verification at igi.org



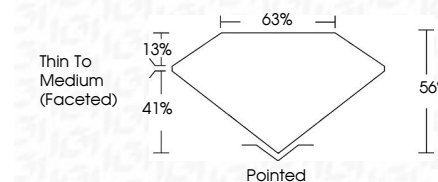
March 12, 2026
IGI Report Number
Description LABORATORY GROWN DIAMOND
Shape and Cutting Style HEART BRILLIANT
Measurements 8.13 X 8.99 X 5.03 MM
GRADING RESULTS
Carat Weight 2.03 CARATS
Color Grade G
Clarity Grade VS 1

March 12, 2026
IGI Report Number
Description LABORATORY GROWN DIAMOND
Shape and Cutting Style HEART BRILLIANT
Measurements 8.13 X 8.99 X 5.03 MM
GRADING RESULTS
Carat Weight 2.03 CARATS
Color Grade G
Clarity Grade VS 1

PROPORTIONS



Sample Image Used



ADDITIONAL GRADING INFORMATION
Polish VERY GOOD
Symmetry VERY GOOD
Fluorescence NONE
Inscription(s) IGI
Comments: This Laboratory Grown Diamond was created by Chemical Vapor Deposition (CVD) growth process. Type IIa

COLOR

D E F G H I J Faint Very Light Light

CLARITY

FL IF VS 1-2 VS 1-2 SI 1-2 I 1-3
Flawless Internally Flawless Very Very Slightly Included Very Slightly Included Slightly Included Included

ADDITIONAL GRADING INFORMATION

Polish VERY GOOD
Symmetry VERY GOOD
Fluorescence NONE
Inscription(s) IGI
Comments: This Laboratory Grown Diamond was created by Chemical Vapor Deposition (CVD) growth process. Type IIa



March 12, 2026
IGI Report No HEART BRILLIANT
8.13 X 8.99 X 5.03 MM
2.03 CARATS G
Color Grade G
Clarity Grade VS 1
Table 56%
Girdle 63%
Thin To Medium (Faceted)
Culet Pointed
Polish VERY GOOD
Symmetry VERY GOOD
Fluorescence NONE
Inscription(s) IGI
Comments: This Laboratory Grown Diamond was created by Chemical Vapor Deposition (CVD) growth process. Type IIa

Certified SUSTAINABILITY RATED DIAMOND
SCS GLOBAL SERVICES
All certified diamonds come with an individual certificate, ONLY available at an accredited retailer