



**ELECTRONIC COPY**

Report verification at [igi.org](http://igi.org)

**DIAMOND REPORT**

February 5, 2026  
IGI Report Number  
Description **NATURAL DIAMOND**  
Shape and Cutting Style **HEART BRILLIANT**  
Measurements **8.54 X 9.49 X 5.97 MM**

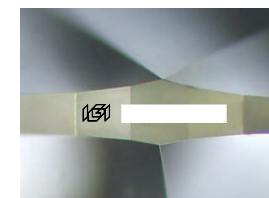
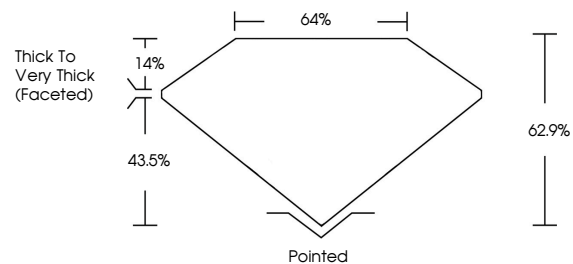
**GRADING RESULTS**

Carat Weight **3.01 CARATS**  
Color Grade **J**  
Clarity Grade **VS 1**  
Cut Grade **VERY GOOD**

**ADDITIONAL GRADING INFORMATION**

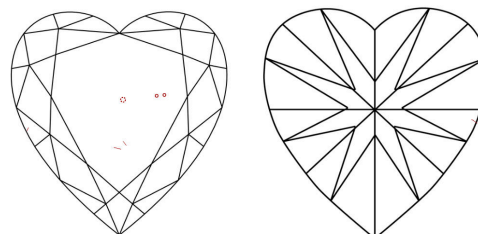
Polish **EXCELLENT**  
Symmetry **EXCELLENT**  
Fluorescence **NONE**  
Inscription(s)

**PROPORTIONS**



Sample Image Used

**CLARITY CHARACTERISTICS**



**KEY TO SYMBOLS**

Red symbols indicate internal characteristics.  
Green symbols indicate external characteristics.

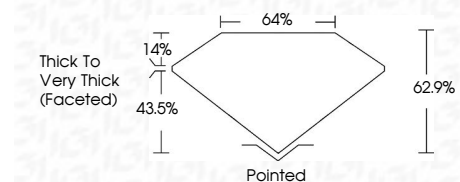
**COLOR**

D - F	G - J	K - M	N - R	S - Z	FANCY
Colorless	Near Colorless	Slightly Tinted	Very Light Color	Light Color	

**CLARITY**

FL	IF	VVS <sup>1-2</sup>	VS <sup>1-2</sup>	SI <sup>1-2</sup>	I <sup>1-3</sup>
Flawless	Internally Flawless	Very Very Slightly Included	Very Slightly Included	Slightly Included	Included

February 5, 2026  
IGI Report Number  
Description **NATURAL DIAMOND**  
Shape and Cutting Style **HEART BRILLIANT**  
Measurements **8.54 X 9.49 X 5.97 MM**  
**GRADING RESULTS**  
Carat Weight **3.01 CARATS**  
Color Grade **J**  
Clarity Grade **VS 1**  
Cut Grade **VERY GOOD**



**ADDITIONAL GRADING INFORMATION**

Polish **EXCELLENT**  
Symmetry **EXCELLENT**  
Fluorescence **NONE**  
Inscription(s)



**IGI**

February 5, 2026  
IGI Report No  
**HEART BRILLIANT**  
8.54 X 9.49 X 5.97 MM  
3.01 CARATS  
J  
Color Grade  
**VERY GOOD**  
VS 1  
Depth  
62.9%  
Table  
64%  
Girdle  
Thick to Very Thick (Faceted)  
Pointed  
Polish  
**EXCELLENT**  
Symmetry  
**EXCELLENT**  
Fluorescence  
**NONE**  
Inscriptions(s)