

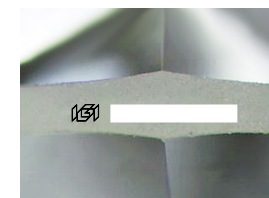
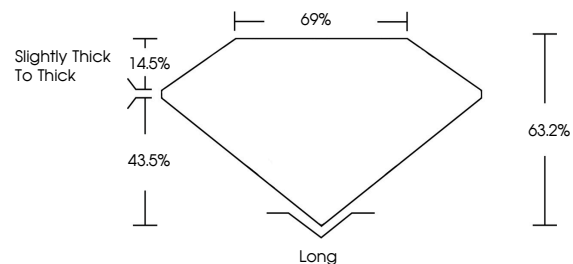


**ELECTRONIC COPY**

Report verification at [igi.org](http://igi.org)

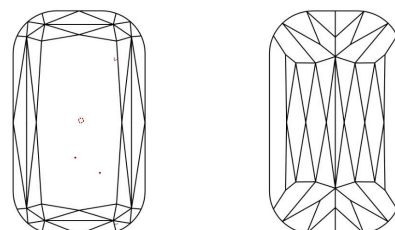
**LABORATORY GROWN DIAMOND REPORT**

**PROPORTIONS**



Sample Image Used

**CLARITY CHARACTERISTICS**



**KEY TO SYMBOLS**

Red symbols indicate internal characteristics.  
Green symbols indicate external characteristics.

**COLOR**

D E F G H I J Faint Very Light Light

**CLARITY**

FL	IF	VS <sup>1-2</sup>	VS <sup>1-2</sup>	SI <sup>1-2</sup>	I <sup>1-3</sup>
Flawless	Internally Flawless	Very Very Slightly Included	Very Slightly Included	Slightly Included	Included

December 9, 2025

IGI Report Number

Description **LABORATORY GROWN DIAMOND**

Shape and Cutting Style **CUSHION MIXED CUT**

Measurements **9.73 X 6.82 X 4.31 MM**

**GRADING RESULTS**

Carat Weight **3.05 CARATS**

Color Grade **FANCY VIVID BLUE**

Clarity Grade **VVS 2**

December 9, 2025

IGI Report Number

Description **LABORATORY GROWN DIAMOND**

Shape and Cutting Style **CUSHION MIXED CUT**

Measurements **9.73 X 6.82 X 4.31 MM**

**GRADING RESULTS**

Carat Weight **3.05 CARATS**

Color Grade **FANCY VIVID BLUE**

Clarity Grade **VVS 2**

**ADDITIONAL GRADING INFORMATION**

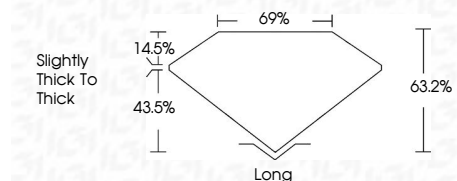
Polish **EXCELLENT**

Symmetry **EXCELLENT**

Fluorescence **NONE**

Inscription(s)

Comments: This Laboratory Grown Diamond was created by Chemical Vapor Deposition (CVD) growth process. Indications of post-growth treatment.



**ADDITIONAL GRADING INFORMATION**

Polish **EXCELLENT**

Symmetry **EXCELLENT**

Fluorescence **NONE**

Inscription(s)

Comments: This Laboratory Grown Diamond was created by Chemical Vapor Deposition (CVD) growth process. Indications of post-growth treatment.



**IGI**



December 9, 2025	3.05 CARATS	Long
IGI Report No	FANCY VIVID BLUE	EXCELLENT
CUSHION MIXED CUT	VVS 2	EXCELLENT
9.73 X 6.82 X 4.31 MM	63.2%	NONE
Carat Weight	6%	
Color Grade	Slightly Thick To Thick	
Clarity Grade		
Depth		
Table		
Graile		
Culet		
Polish		
Symmetry		
Fluorescence		
Inscription(s)		

Comments: This Laboratory Grown Diamond was created by Chemical Vapor Deposition (CVD) growth process. Indications of post-growth treatment.