



LABORATORY GROWN DIAMOND REPORT

February 14, 2026

IGI Report Number

Description

LABORATORY GROWN DIAMOND

Shape and Cutting Style

MARQUISE BRILLIANT

Measurements

6.50 X 3.35 X 2.12 MM

GRADING RESULTS

Carat Weight

0.26 CARAT

Color Grade

G

Clarity Grade

VS 2

ADDITIONAL GRADING INFORMATION

Polish

VERY GOOD

Symmetry

VERY GOOD

Fluorescence

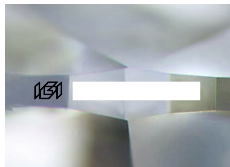
NONE

Inscription(s)

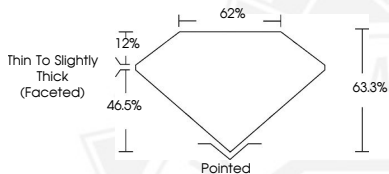


Comments: As Grown - No indication of post-growth treatment. This Laboratory Grown Diamond was created by High Pressure High Temperature (HPHT) growth process.

Type II
Faint Blue



Sample Image Used



February 14, 2026

IGI Report Number

MARQUISE BRILLIANT

LABORATORY GROWN DIAMOND

6.50 X 3.35 X 2.12 MM

Carat Weight

0.26 CARAT

Color Grade

G

Clarity Grade

VS 2

Polish

VERY GOOD

Symmetry

VERY GOOD

Fluorescence

NONE

Inscription(s)

Comments: As Grown - No indication of post-growth treatment. This Laboratory Grown Diamond was created by High Pressure High Temperature (HPHT) growth process. Type II Faint Blue

February 14, 2026

IGI Report Number

MARQUISE BRILLIANT

LABORATORY GROWN DIAMOND

6.50 X 3.35 X 2.12 MM

Carat Weight

0.26 CARAT

Color Grade

G

Clarity Grade

VS 2

Polish

VERY GOOD

Symmetry

VERY GOOD

Fluorescence

NONE

Inscription(s)

Comments: As Grown - No indication of post-growth treatment. This Laboratory Grown Diamond was created by High Pressure High Temperature (HPHT) growth process. Type II Faint Blue



THIS DOCUMENT WAS PRODUCED WITH THE FOLLOWING SECURITY MEASURES: SPECIAL DOCUMENT PAPER, INK SCREENS, WATERMARK, BACKGROUND DESIGNS, HOLOGRAM AND OTHER SECURITY FEATURES NOT LISTED AND DO EXCEED DOCUMENT SECURITY INDUSTRY GUIDELINES.