



ELECTRONIC COPY

Report verification at igi.org



May 4, 2026

IGI Report Number

Description LABORATORY GROWN DIAMOND

Shape and Cutting Style OVAL BRILLIANT

Measurements 11.11 X 7.90 X 4.79 MM

GRADING RESULTS

Carat Weight 2.60 CARATS

Color Grade F

Clarity Grade VVS 2

May 4, 2026

IGI Report Number

Description LABORATORY GROWN DIAMOND

Shape and Cutting Style OVAL BRILLIANT

Measurements 11.11 X 7.90 X 4.79 MM

GRADING RESULTS

Carat Weight 2.60 CARATS

Color Grade F

Clarity Grade VVS 2

ADDITIONAL GRADING INFORMATION

Polish EXCELLENT

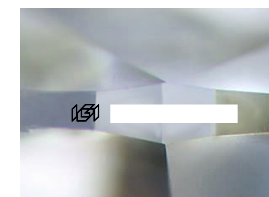
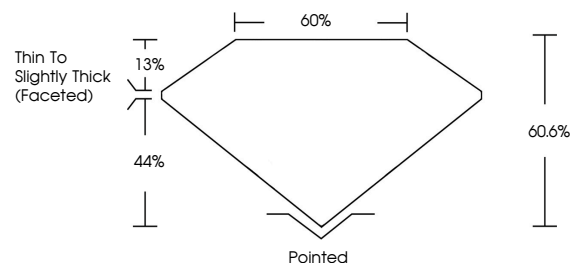
Symmetry EXCELLENT

Fluorescence NONE

Inscription(s) IGI

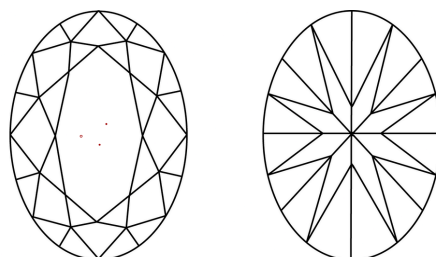
Comments: This Laboratory Grown Diamond was created by Chemical Vapor Deposition (CVD) growth process. Type IIa

PROPORTIONS



Sample Image Used

CLARITY CHARACTERISTICS



KEY TO SYMBOLS

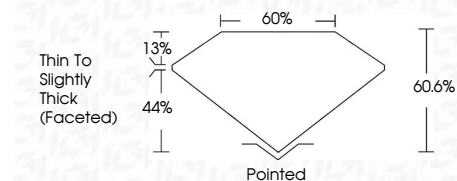
Red symbols indicate internal characteristics. Green symbols indicate external characteristics.

COLOR

D E F G H I J Faint Very Light Light

CLARITY

FL IF VVS 1-2 VS 1-2 SI 1-2 I 1-3
Flawless Internally Flawless Very Very Slightly Included Very Slightly Included Slightly Included Included



ADDITIONAL GRADING INFORMATION

Polish EXCELLENT

Symmetry EXCELLENT

Fluorescence NONE

Inscription(s) IGI

Comments: This Laboratory Grown Diamond was created by Chemical Vapor Deposition (CVD) growth process. Type IIa



IGI



May 4, 2026	2.60 CARATS
IGI Report No	F
OVAL BRILLIANT	VVS 2
11.11 X 7.90 X 4.79 MM	60.6%
Carat Weight	60%
Color Grade	Thin to Slightly Thick (Faceted)
Clarity Grade	Pointed
Depth	EXCELLENT
Table	EXCELLENT
Grailes	NONE
Culet	IGI
Polish	
Symmetry	
Fluorescence	
Inscription(s)	

Comments: This Laboratory Grown Diamond was created by Chemical Vapor Deposition (CVD) growth process. Type IIa