



**ELECTRONIC COPY**


Report verification at [igi.org](http://igi.org)

**LABORATORY GROWN DIAMOND REPORT**

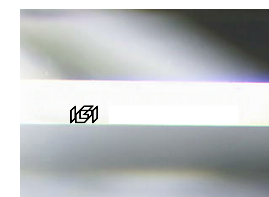
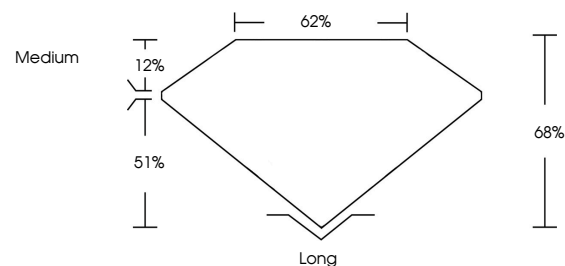
September 29, 2025  
 IGI Report Number  
 Description **LABORATORY GROWN DIAMOND**  
 Shape and Cutting Style **EMERALD CUT**  
 Measurements **7.27 X 5.18 X 3.52 MM**  
**GRADING RESULTS**  
 Carat Weight **1.32 CARAT**  
 Color Grade **D**  
 Clarity Grade **VVS 1**

**ADDITIONAL GRADING INFORMATION**

Polish **EXCELLENT**  
 Symmetry **EXCELLENT**  
 Fluorescence **NONE**

Inscription(s)   
 Comments: As Grown - No indication of post-growth treatment.  
 This Laboratory Grown Diamond was created by High Pressure High Temperature (HPHT) growth process. Type II

**PROPORTIONS**



Sample Image Used

**COLOR**

D E F G H I J Faint Very Light Light

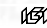
**CLARITY**

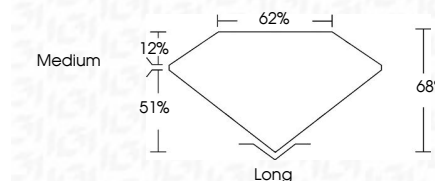
IF	VS <sup>1-2</sup>	VS <sup>1-2</sup>	SI <sup>1-2</sup>	I <sup>1-3</sup>
Internally Flawless	Very Very Slightly Included	Very Slightly Included	Slightly Included	Included

September 29, 2025  
 IGI Report Number  
 Description **LABORATORY GROWN DIAMOND**  
 Shape and Cutting Style **EMERALD CUT**  
 Measurements **7.27 X 5.18 X 3.52 MM**  
**GRADING RESULTS**  
 Carat Weight **1.32 CARAT**  
 Color Grade **D**  
 Clarity Grade **VVS 1**

**ADDITIONAL GRADING INFORMATION**

Polish **EXCELLENT**  
 Symmetry **EXCELLENT**  
 Fluorescence **NONE**

Inscription(s)   
 Comments: As Grown - No indication of post-growth treatment.  
 This Laboratory Grown Diamond was created by High Pressure High Temperature (HPHT) growth process. Type II



**IGI**

September 29, 2025  
 IGI Report No  
**EMERALD CUT**  
 7.27 X 5.18 X 3.52 MM  
 Carat Weight  
 Color Grade  
 Clarity Grade  
 Depth  
 Table  
 Girdle  
 Culet  
 Polish  
 Symmetry  
 Fluorescence  
 Inscription(s)  
 1.32 CARAT  
 D  
 VVS 1  
 68%  
 62%  
 Medium  
 Long  
 EXCELLENT  
 EXCELLENT  
 NONE  
  
 Comments: As Grown - No indication of post-growth treatment.  
 This Laboratory Grown Diamond was created by High Pressure High Temperature (HPHT) growth process. Type II