



# INTERNATIONAL GEMOLOGICAL INSTITUTE

## LABORATORY GROWN DIAMOND REPORT

September 25, 2025

IGI Report Number

Description

Shape and Cutting Style

Measurements

**LABORATORY GROWN DIAMOND**

**OVAL BRILLIANT**

**5.82 X 3.95 X 2.31 MM**

### GRADING RESULTS

Carat Weight

**0.33 CARAT**

Color Grade

**E**

Clarity Grade

**VS 1**

### ADDITIONAL GRADING INFORMATION

Polish

**VERY GOOD**

Symmetry

**VERY GOOD**

Fluorescence

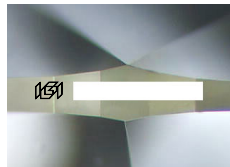
**NONE**

Inscription(s)

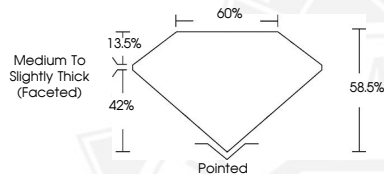


Comments: This Laboratory Grown Diamond was created by Chemical Vapor Deposition (CVD) growth process. Type IIa

ELECTRONIC COPY



Sample Image Used



September 25, 2025

IGI Report Number

**OVAL BRILLIANT**

**LABORATORY GROWN DIAMOND**

**5.82 X 3.95 X 2.31 MM**

Carat Weight **0.33 CARAT**

Color Grade **E**

Clarity Grade **VS 1**

Polish **VERY GOOD**

Symmetry **VERY GOOD**

Fluorescence **NONE**

Inscription(s) Comments: This Laboratory Grown Diamond was created by Chemical Vapor Deposition (CVD) growth process. Type IIa

September 25, 2025

IGI Report Number

**OVAL BRILLIANT**

**LABORATORY GROWN DIAMOND**

**5.82 X 3.95 X 2.31 MM**

Carat Weight **0.33 CARAT**

Color Grade **E**

Clarity Grade **VS 1**

Polish **VERY GOOD**

Symmetry **VERY GOOD**

Fluorescence **NONE**

Inscription(s) Comments: This Laboratory Grown Diamond was created by Chemical Vapor Deposition (CVD) growth process. Type IIa



THIS DOCUMENT WAS PRODUCED WITH THE FOLLOWING SECURITY MEASURES: SPECIAL DOCUMENT PAPER, INK SCREENS, WATERMARK, BACKGROUND DESIGNS, HOLOGRAM AND OTHER SECURITY FEATURES NOT LISTED AND DO EXCEED DOCUMENT SECURITY INDUSTRY GUIDELINES.

For terms & conditions and to verify this report, please visit [www.igi.org](http://www.igi.org)