



**ELECTRONIC COPY**

Report verification at [igi.org](http://igi.org)

**LABORATORY GROWN DIAMOND REPORT**

June 24, 2024  
 IGI Report Number  
 Description **LABORATORY GROWN DIAMOND**  
 Shape and Cutting Style **PEAR MODIFIED BRILLIANT**  
 Measurements **10.14 X 6.27 X 3.76 MM**

**GRADING RESULTS**

Carat Weight **1.59 CARAT**  
 Color Grade **FANCY VIVID BLUE**  
 Clarity Grade **VS 2**

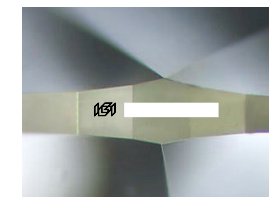
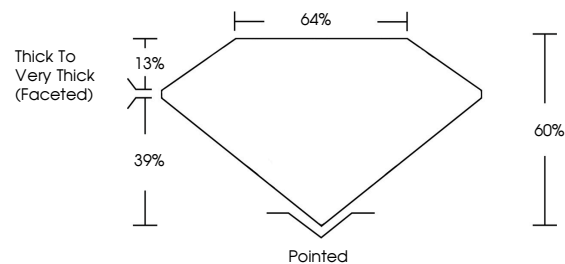
**ADDITIONAL GRADING INFORMATION**

Polish **EXCELLENT**  
 Symmetry **EXCELLENT**  
 Fluorescence **NONE**

Inscription(s)

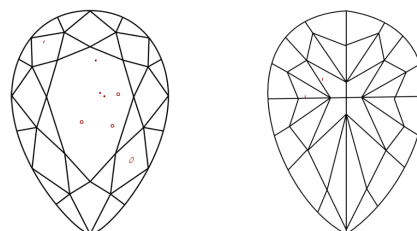
Comments: This Laboratory Grown Diamond was created by Chemical Vapor Deposition (CVD) growth process. Indications of post-growth treatment.

**PROPORTIONS**



Sample Image Used

**CLARITY CHARACTERISTICS**



**KEY TO SYMBOLS**

Red symbols indicate internal characteristics.  
 Green symbols indicate external characteristics.

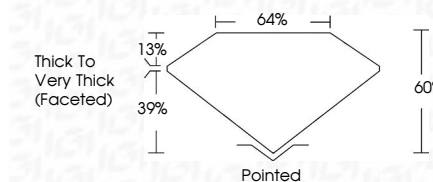
**COLOR**

D E F G H I J Faint Very Light Light

**CLARITY**

IF	VS <sup>1-2</sup>	VS <sup>1-2</sup>	SI <sup>1-2</sup>	I <sup>1-3</sup>
Internally Flawless	Very Very Slightly Included	Very Slightly Included	Slightly Included	Included

June 24, 2024  
 IGI Report Number  
 Description **LABORATORY GROWN DIAMOND**  
 Shape and Cutting Style **PEAR MODIFIED BRILLIANT**  
 Measurements **10.14 X 6.27 X 3.76 MM**  
**GRADING RESULTS**  
 Carat Weight **1.59 CARAT**  
 Color Grade **FANCY VIVID BLUE**  
 Clarity Grade **VS 2**



**ADDITIONAL GRADING INFORMATION**

Polish **EXCELLENT**  
 Symmetry **EXCELLENT**  
 Fluorescence **NONE**

Inscription(s)   
 Comments: This Laboratory Grown Diamond was created by Chemical Vapor Deposition (CVD) growth process. Indications of post-growth treatment.



June 24, 2024  
 IGI Report No **PEAR MODIFIED BRILLIANT**  
 10.14 X 6.27 X 3.76 MM  
 Carat Weight **1.59 CARAT**  
 Color Grade **FANCY VIVID BLUE**  
 Clarity Grade **VS 2**  
 Depth **60%**  
 Table **64%**  
 Girdle **Thick to Very Thick (Faceted)**  
 Culet **Pointed**  
 Polish **EXCELLENT**  
 Symmetry **EXCELLENT**  
 Fluorescence **NONE**  
 Inscription(s)

Comments: This Laboratory Grown Diamond was created by Chemical Vapor Deposition (CVD) growth process. Indications of post-growth treatment.