



ELECTRONIC COPY

Report verification at igi.org

LABORATORY GROWN DIAMOND REPORT

May 27, 2025
IGI Report Number
Description LABORATORY GROWN DIAMOND
Shape and Cutting Style HEART BRILLIANT
Measurements 9.88 X 11.30 X 6.39 MM

GRADING RESULTS

Carat Weight 4.02 CARATS
Color Grade F
Clarity Grade VS 1

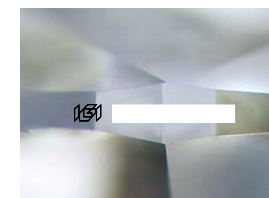
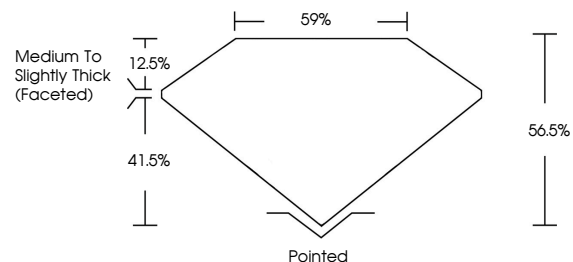
ADDITIONAL GRADING INFORMATION

Polish EXCELLENT
Symmetry EXCELLENT
Fluorescence NONE

Inscription(s) IGI

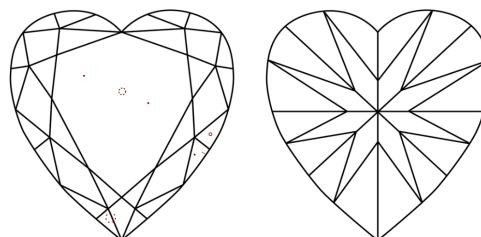
Comments: This Laboratory Grown Diamond was created by Chemical Vapor Deposition (CVD) growth process. Type IIa

PROPORTIONS



Sample Image Used

CLARITY CHARACTERISTICS



KEY TO SYMBOLS

Red symbols indicate internal characteristics.
Green symbols indicate external characteristics.

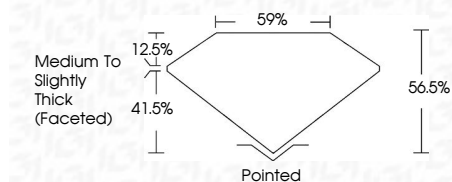
COLOR

D E F G H I J Faint Very Light Light

CLARITY

IF WS 1-2 VS 1-2 SI 1-2 I 1-3
Internally Flawless Very Very Slightly Included Very Slightly Included Slightly Included Included

May 27, 2025
IGI Report Number
Description LABORATORY GROWN DIAMOND
Shape and Cutting Style HEART BRILLIANT
Measurements 9.88 X 11.30 X 6.39 MM
GRADING RESULTS
Carat Weight 4.02 CARATS
Color Grade F
Clarity Grade VS 1



ADDITIONAL GRADING INFORMATION

Polish EXCELLENT
Symmetry EXCELLENT
Fluorescence NONE

Inscription(s) IGI

Comments: This Laboratory Grown Diamond was created by Chemical Vapor Deposition (CVD) growth process. Type IIa



IGI



May 27, 2025
IGI Report No HEART BRILLIANT
9.88 X 11.30 X 6.39 MM
4.02 CARATS
F
Carat Weight 4.02 CARATS
Color Grade F
Clarity Grade VS 1
Table 56.5%
Depth 41.5%
Girdle Medium to Slightly Thick (Faceted)
Culet Pointed
Polish EXCELLENT
Symmetry EXCELLENT
Fluorescence NONE
Inscription(s) IGI

Comments: This Laboratory Grown Diamond was created by Chemical Vapor Deposition (CVD) growth process. Type IIa