



ELECTRONIC COPY

LABORATORY GROWN DIAMOND REPORT

July 20, 2023
IGI Report Number
Description LABORATORY GROWN DIAMOND
Shape and Cutting Style TAPERED BAGUETTE
Measurements 10.77 X 5.27 X 2.13 MM

GRADING RESULTS

Carat Weight 1.01 CARAT
Color Grade G
Clarity Grade VS 2

ADDITIONAL GRADING INFORMATION

Polish EXCELLENT
Symmetry EXCELLENT
Fluorescence NONE

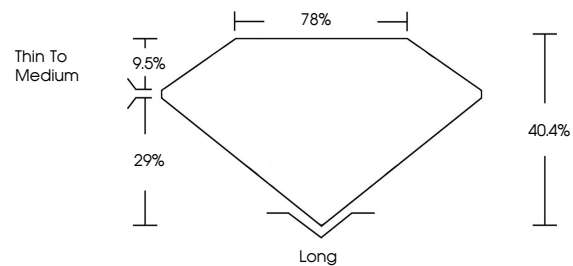
Inscription(s) IGI

Comments: This Laboratory Grown Diamond was created by Chemical Vapor Deposition (CVD) growth process and may include post-growth treatment. Type IIa

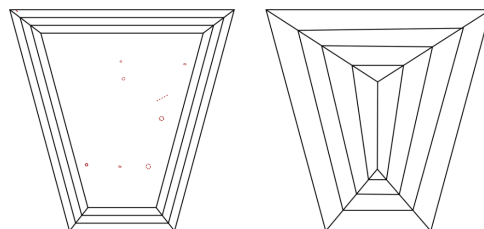
LABORATORY GROWN DIAMOND REPORT

Report verification at igi.org

PROPORTIONS



CLARITY CHARACTERISTICS



KEY TO SYMBOLS

Red symbols indicate internal characteristics.
Green symbols indicate external characteristics.

LABORATORY GROWN DIAMOND REPORT

GRADING SCALES

CLARITY

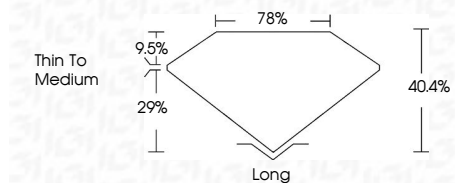
Table mapping clarity grades (IF, VVS, VS, SI, I) to descriptions (Internally Flawless, Very Very Slightly Included, etc.)

COLOR

Table mapping color grades (D, E, F, G, H, I, J) to descriptions (Faint, Very Light, Light)

LABORATORY GROWN DIAMOND REPORT

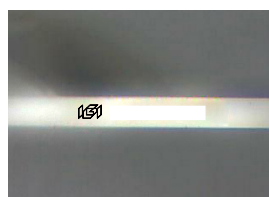
July 20, 2023
IGI Report Number
Description LABORATORY GROWN DIAMOND
Shape and Cutting Style TAPERED BAGUETTE
Measurements 10.77 X 5.27 X 2.13 MM
GRADING RESULTS
Carat Weight 1.01 CARAT
Color Grade G
Clarity Grade VS 2



ADDITIONAL GRADING INFORMATION

Polish EXCELLENT
Symmetry EXCELLENT
Fluorescence NONE
Inscription(s) IGI

Comments: This Laboratory Grown Diamond was created by Chemical Vapor Deposition (CVD) growth process and may include post-growth treatment. Type IIa



Sample Image Used



July 20, 2023
IGI Report No TAPERED BAGUETTE
10.77 X 5.27 X 2.13 MM
Carat Weight 1.01 CARAT
Color Grade G
Clarity Grade VS 2
Depth 40.4%
Table 75%
Girdle Thin To Medium
Culet Long
Polish EXCELLENT
Symmetry EXCELLENT
Fluorescence NONE
Inscription(s) IGI
Comments: This Laboratory Grown Diamond was created by Chemical Vapor Deposition (CVD) growth process and may include post-growth treatment. Type IIa