



ELECTRONIC COPY

LABORATORY GROWN DIAMOND REPORT

LG

Report verification at igi.org

LABORATORY GROWN DIAMOND REPORT

LABORATORY GROWN DIAMOND REPORT

LABORATORY GROWN DIAMOND REPORT

April 13, 2024
IGI Report Number LG
Description LABORATORY GROWN DIAMOND
Shape and Cutting Style PRINCESS CUT
Measurements 9.67 X 9.48 X 6.59 MM

GRADING RESULTS

Carat Weight 5.58 CARATS
Color Grade FANCY INTENSE PINK
Clarity Grade VS 1

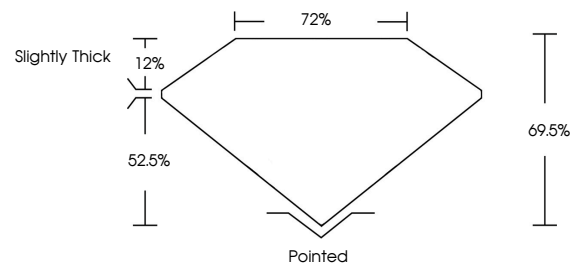
ADDITIONAL GRADING INFORMATION

Polish EXCELLENT
Symmetry EXCELLENT
Fluorescence SLIGHT

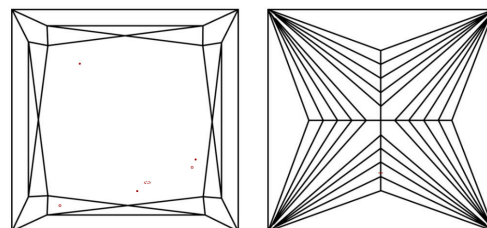
Inscription(s) IGI LG

Comments: This Laboratory Grown Diamond was created by Chemical Vapor Deposition (CVD) growth process.
Indications of post-growth treatment.

PROPORTIONS



CLARITY CHARACTERISTICS



KEY TO SYMBOLS

Red symbols indicate internal characteristics.
Green symbols indicate external characteristics.

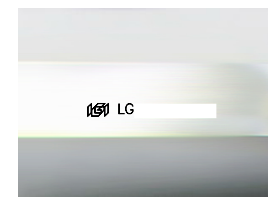
GRADING SCALES

CLARITY

Table mapping clarity grades (IF, VVS, VS, SI, I) to their descriptions (Internally Flawless, Very Very Slightly Included, etc.).

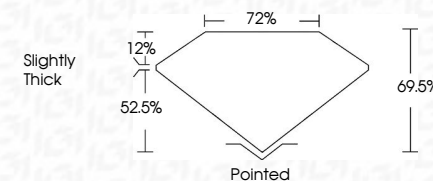
COLOR

Table mapping color grades (D, E, F, G, H, I, J) to their descriptions (Light Tint, Fancy Light, etc.).



Sample Image Used

April 13, 2024
IGI Report Number LG
Description LABORATORY GROWN DIAMOND
Shape and Cutting Style PRINCESS CUT
Measurements 9.67 X 9.48 X 6.59 MM
GRADING RESULTS
Carat Weight 5.58 CARATS
Color Grade FANCY INTENSE PINK
Clarity Grade VS 1



ADDITIONAL GRADING INFORMATION

Polish EXCELLENT
Symmetry EXCELLENT
Fluorescence SLIGHT
Inscription(s) IGI LG

Comments: This Laboratory Grown Diamond was created by Chemical Vapor Deposition (CVD) growth process.
Indications of post-growth treatment.



IGI

April 13, 2024
IGI Report No LG
PRINCESS CUT
5.58 CARATS
FANCY INTENSE PINK
VS 1
69.5%
72%
Slightly Thick
Pointed
EXCELLENT
EXCELLENT
SLIGHT
IGI LG

Comments: This Laboratory Grown Diamond was created by Chemical Vapor Deposition (CVD) growth process.
Indications of post-growth treatment.