



ELECTRONIC COPY

Report verification at igi.org

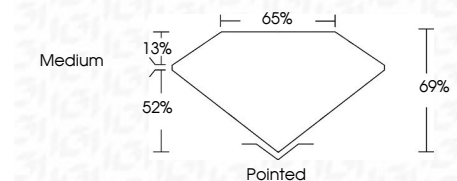


September 29, 2025
IGI Report Number
Description LABORATORY GROWN DIAMOND

Shape and Cutting Style CUT CORNERED RECTANGULAR MODIFIED BRILLIANT

Measurements 9.07 X 6.26 X 4.32 MM

GRADING RESULTS
Carat Weight 2.16 CARATS
Color Grade F
Clarity Grade VVS 2



ADDITIONAL GRADING INFORMATION

Polish EXCELLENT
Symmetry EXCELLENT
Fluorescence NONE

Inscription(s)
Comments: This Laboratory Grown Diamond was created by Chemical Vapor Deposition (CVD) growth process. Type IIa



September 29, 2025
IGI Report No.
CUT CORNERED RECT. MODIFIED BRILLIANT
2.16 CARATS
F
9.07 X 6.26 X 4.32 MM
Color Grade
VVS 2
69%
65%
Medium
Pointed
EXCELLENT
EXCELLENT
NONE
Inscription(s)

Comments: This Laboratory Grown Diamond was created by Chemical Vapor Deposition (CVD) growth process. Type IIa

September 29, 2025
IGI Report Number
Description LABORATORY GROWN DIAMOND

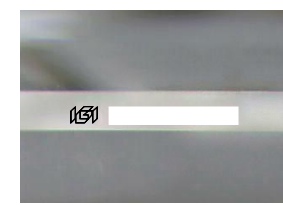
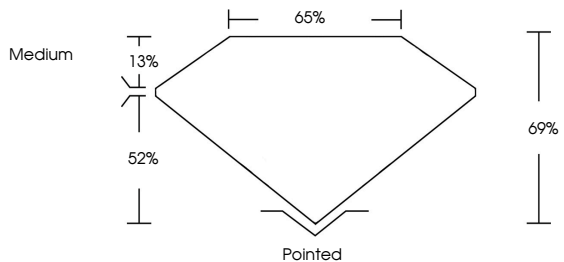
Shape and Cutting Style CUT CORNERED RECTANGULAR MODIFIED BRILLIANT
Measurements 9.07 X 6.26 X 4.32 MM

GRADING RESULTS
Carat Weight 2.16 CARATS
Color Grade F
Clarity Grade VVS 2

ADDITIONAL GRADING INFORMATION
Polish EXCELLENT
Symmetry EXCELLENT
Fluorescence NONE

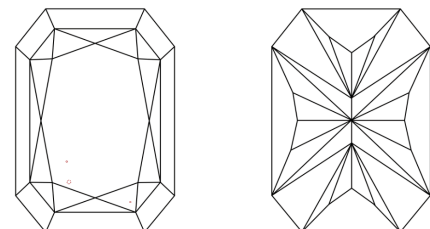
Inscription(s)
Comments: This Laboratory Grown Diamond was created by Chemical Vapor Deposition (CVD) growth process. Type IIa

PROPORTIONS



Sample Image Used

CLARITY CHARACTERISTICS



KEY TO SYMBOLS
Red symbols indicate internal characteristics.
Green symbols indicate external characteristics.

COLOR

D E F G H I J Faint Very Light Light

CLARITY

IF VVS 1-2 VS 1-2 SI 1-2 I 1-3
Internally Flawless Very Very Slightly Included Very Slightly Included Slightly Included Included

