



Report verification at [igi.org](http://igi.org)

**ELECTRONIC COPY**

**LABORATORY GROWN DIAMOND REPORT**

September 11, 2025  
IGI Report Number  
Description **LABORATORY GROWN DIAMOND**  
Shape and Cutting Style **PEAR MODIFIED BRILLIANT**  
Measurements **8.90 X 5.46 X 3.38 MM**

**GRADING RESULTS**

Carat Weight **1.18 CARAT**  
Color Grade **FANCY VIVID BLUE**  
Clarity Grade **VVS 1**

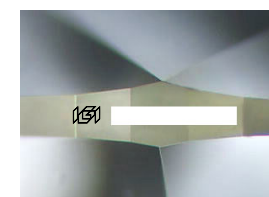
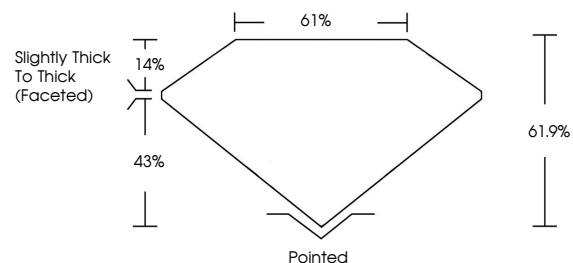
**ADDITIONAL GRADING INFORMATION**

Polish **EXCELLENT**  
Symmetry **EXCELLENT**  
Fluorescence **NONE**

Inscription(s)

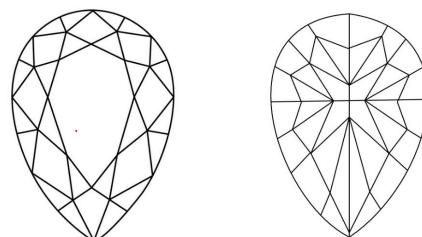
Comments: This Laboratory Grown Diamond was created by Chemical Vapor Deposition (CVD) growth process.  
Indications of post-growth treatment.

**PROPORTIONS**



Sample Image Used

**CLARITY CHARACTERISTICS**



**KEY TO SYMBOLS**

Red symbols indicate internal characteristics.  
Green symbols indicate external characteristics.

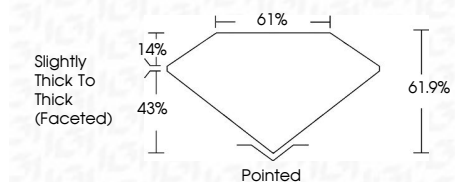
**COLOR**

D E F G H I J Faint Very Light Light

**CLARITY**

IF VVS<sup>1-2</sup> VS<sup>1-2</sup> SI<sup>1-2</sup> I<sup>1-3</sup>  
Internally Flawless Very Very Slightly Included Very Slightly Included Slightly Included Included

September 11, 2025  
IGI Report Number  
Description **LABORATORY GROWN DIAMOND**  
Shape and Cutting Style **PEAR MODIFIED BRILLIANT**  
Measurements **8.90 X 5.46 X 3.38 MM**  
**GRADING RESULTS**  
Carat Weight **1.18 CARAT**  
Color Grade **FANCY VIVID BLUE**  
Clarity Grade **VVS 1**



**ADDITIONAL GRADING INFORMATION**

Polish **EXCELLENT**  
Symmetry **EXCELLENT**  
Fluorescence **NONE**

Inscription(s)   
Comments: This Laboratory Grown Diamond was created by Chemical Vapor Deposition (CVD) growth process.  
Indications of post-growth treatment.



September 11, 2025  
IGI Report No  
**PEAR MODIFIED BRILLIANT**  
**8.90 X 5.46 X 3.38 MM**  
Carat Weight **1.18 CARAT**  
Color Grade **FANCY VIVID BLUE**  
Clarity Grade **VVS 1**  
Depth **61.9%**  
Table **61%**  
Girdle **Slightly Thick To Thick (Faceted)**  
Culet **Pointed**  
Polish **EXCELLENT**  
Symmetry **EXCELLENT**  
Fluorescence **NONE**  
Inscription(s)

Comments: This Laboratory Grown Diamond was created by Chemical Vapor Deposition (CVD) growth process.  
Indications of post-growth treatment.