



LABORATORY GROWN DIAMOND REPORT

April 10, 2026

IGI Report Number

Description

LABORATORY GROWN DIAMOND

Shape and Cutting Style

ROUND BRILLIANT

Measurements

6.12 - 6.17 X 3.84 MM

GRADING RESULTS

Carat Weight

0.90 CARAT

Color Grade

FANCY BROWN

Clarity Grade

VVS 2

Cut Grade

IDEAL

ADDITIONAL GRADING INFORMATION

Polish

EXCELLENT

Symmetry

EXCELLENT

Fluorescence

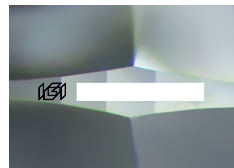
VERY SLIGHT

Inscription(s)

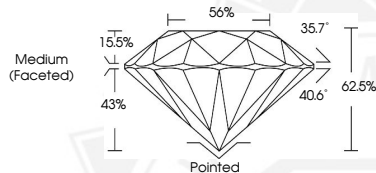


Comments: This Laboratory Grown Diamond was created by Chemical Vapor Deposition (CVD) growth process.

Indications of post-growth treatment.



Sample Image Used



April 10, 2026

IGI Report Number

ROUND BRILLIANT

LABORATORY GROWN DIAMOND

6.12 - 6.17 X 3.84 MM

Carat Weight

0.90 CARAT

Color Grade

FANCY BROWN

Clarity Grade

VVS 2

Cut Grade

IDEAL

Polish

EXCELLENT

Symmetry

EXCELLENT

Fluorescence

VERY SLIGHT

Inscription(s)



Comments: This Laboratory Grown Diamond was created by Chemical Vapor Deposition (CVD) growth process. Indications of post-growth treatment.

April 10, 2026

IGI Report Number

ROUND BRILLIANT

LABORATORY GROWN DIAMOND

6.12 - 6.17 X 3.84 MM

Carat Weight

0.90 CARAT

Color Grade

FANCY BROWN

Clarity Grade

VVS 2

Cut Grade

IDEAL

Polish

EXCELLENT

Symmetry

EXCELLENT

Fluorescence

VERY SLIGHT

Inscription(s)



Comments: This Laboratory Grown Diamond was created by Chemical Vapor Deposition (CVD) growth process. Indications of post-growth treatment.



THIS DOCUMENT WAS PRODUCED WITH THE FOLLOWING SECURITY MEASURES: SPECIAL DOCUMENT PAPER, INK SCREENS, WATERMARK, BACKGROUND DESIGNS, HOLOGRAM AND OTHER SECURITY FEATURES NOT LISTED AND DO EXCEED DOCUMENT SECURITY INDUSTRY GUIDELINES.