



ELECTRONIC COPY

Report verification at igi.org

LABORATORY GROWN DIAMOND REPORT

April 7, 2025
IGI Report Number
Description LABORATORY GROWN DIAMOND
Shape and Cutting Style CUT CORNERED RECTANGULAR MIXED CUT
Measurements 9.04 X 6.61 X 4.60 MM

GRADING RESULTS

Carat Weight 2.69 CARATS
Color Grade FANCY VIVID YELLOW
Clarity Grade VS 1

ADDITIONAL GRADING INFORMATION

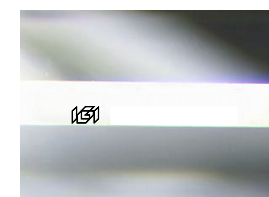
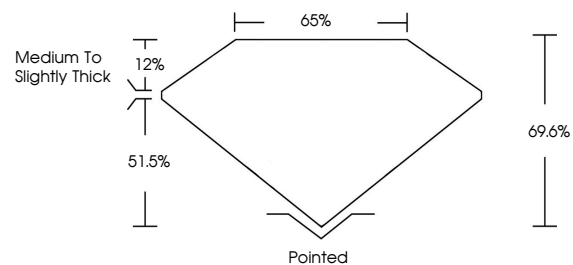
Polish EXCELLENT
Symmetry EXCELLENT
Fluorescence NONE

Inscription(s) IGI

Comments: This Laboratory Grown Diamond was created by Chemical Vapor Deposition (CVD) growth process.

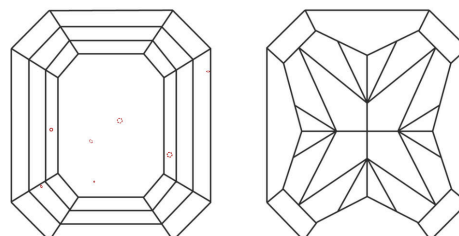
Secondary color: Brown

PROPORTIONS



Sample Image Used

CLARITY CHARACTERISTICS



KEY TO SYMBOLS

Red symbols indicate internal characteristics.
Green symbols indicate external characteristics.

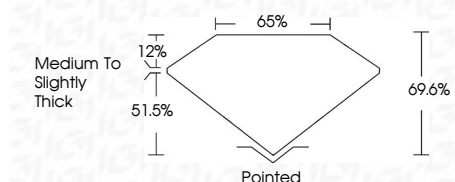
COLOR

D E F G H I J Faint Very Light Light

CLARITY

IF VS 1-2 VS 1-2 SI 1-2 I 1-3
Internally Flawless Very Very Slightly Included Very Slightly Included Slightly Included Included

April 7, 2025
IGI Report Number
Description LABORATORY GROWN DIAMOND
Shape and Cutting Style CUT CORNERED RECTANGULAR MIXED CUT
Measurements 9.04 X 6.61 X 4.60 MM
GRADING RESULTS
Carat Weight 2.69 CARATS
Color Grade FANCY VIVID YELLOW
Clarity Grade VS 1



ADDITIONAL GRADING INFORMATION

Polish EXCELLENT
Symmetry EXCELLENT
Fluorescence NONE

Inscription(s) IGI
Comments: This Laboratory Grown Diamond was created by Chemical Vapor Deposition (CVD) growth process.

Secondary color: Brown



Summary table of report details including date, report number, description, measurements, grading results, and additional information.

Comments: This Laboratory Grown Diamond was created by Chemical Vapor Deposition (CVD) growth process. Secondary color: Brown