



ELECTRONIC COPY

Report verification at igi.org



April 28, 2026
 IGI Report Number
 Description **LABORATORY GROWN DIAMOND**
 Shape and Cutting Style **MARQUISE BRILLIANT**
 Measurements **10.08 X 5.26 X 3.35 MM**
GRADING RESULTS
 Carat Weight **1.02 CARAT**
 Color Grade **FANCY VIVID PINK**
 Clarity Grade **VVS 2**

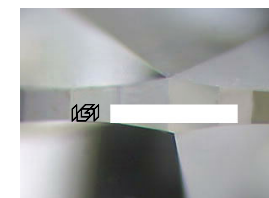
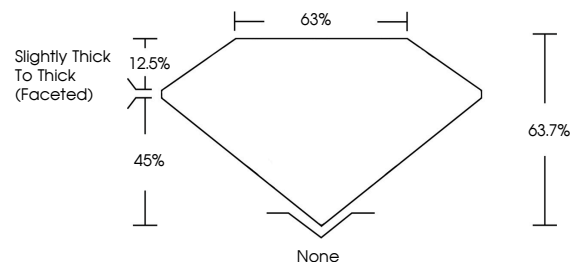
April 28, 2026
 IGI Report Number
 Description **LABORATORY GROWN DIAMOND**
 Shape and Cutting Style **MARQUISE BRILLIANT**
 Measurements **10.08 X 5.26 X 3.35 MM**

GRADING RESULTS
 Carat Weight **1.02 CARAT**
 Color Grade **FANCY VIVID PINK**
 Clarity Grade **VVS 2**

ADDITIONAL GRADING INFORMATION
 Polish **VERY GOOD**
 Symmetry **EXCELLENT**
 Fluorescence **STRONG**

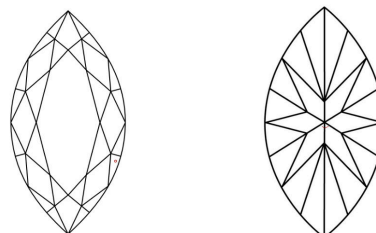
Inscription(s)
 Comments: This Laboratory Grown Diamond was created by High Pressure High Temperature (HPHT) growth process. Indications of post-growth treatment.

PROPORTIONS



Sample Image Used

CLARITY CHARACTERISTICS



KEY TO SYMBOLS

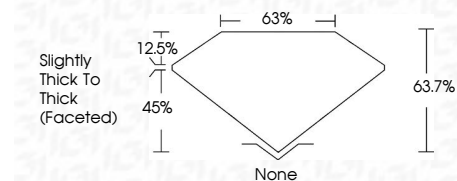
Red symbols indicate internal characteristics. Green symbols indicate external characteristics.

COLOR

D E F G H I J Faint Very Light Light

CLARITY

FL	IF	VVS ¹⁻²	VS ¹⁻²	SI ¹⁻²	I ¹⁻³
Flawless	Internally Flawless	Very Very Slightly Included	Very Slightly Included	Slightly Included	Included



ADDITIONAL GRADING INFORMATION

Polish **VERY GOOD**
 Symmetry **EXCELLENT**
 Fluorescence **STRONG**
 Inscription(s)
 Comments: This Laboratory Grown Diamond was created by High Pressure High Temperature (HPHT) growth process. Indications of post-growth treatment.



April 28, 2026
 IGI Report No **MARQUISE BRILLIANT**
 10.08 X 5.26 X 3.35 MM
 Carat Weight **1.02 CARAT**
 Color Grade **FANCY VIVID PINK**
 Clarity Grade **VVS 2**
 Depth **45%**
 Table **12.5%**
 Girdle **Slightly Thick To Thick (Faceted)**
 Culet **None**
 Polish **VERY GOOD**
 Symmetry **EXCELLENT**
 Fluorescence **STRONG**
 Inscription(s)

Comments: This Laboratory Grown Diamond was created by High Pressure High Temperature (HPHT) growth process. Indications of post-growth treatment.