



**ELECTRONIC COPY**

## LABORATORY GROWN DIAMOND REPORT

Report verification at [igi.org](http://igi.org)

Shape and Cutting Style	MARQUISE BRILLIANT
Measurements	16.12 X 7.47 X 4.25 MM

## GRADING RESULTS

Carat Weight	3.00 CARATS
Color Grade	FANCY VIVID GREEN
Clarity Grade	VVS 2

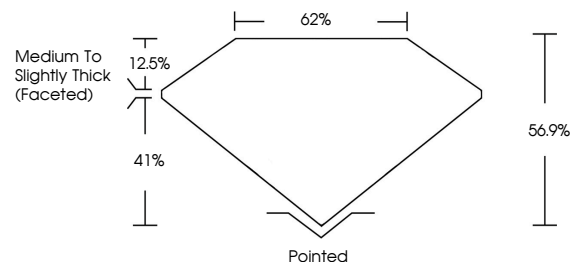
### ADDITIONAL GRADING INFORMATION

Polish	EXCELLENT
Symmetry	VERY GOOD
Fluorescence	NONE

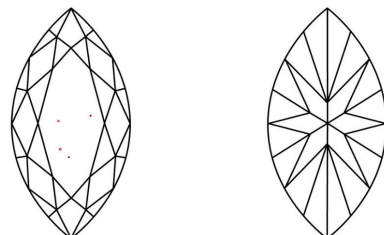
Inscription(s) 

Comments: This Laboratory Grown Diamond was created by Chemical Vapor Deposition (CVD) growth process.  
Indications of post-growth treatment.

## PROPORTIONS

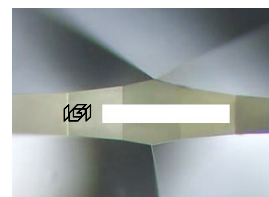


## CLARITY CHARACTERISTICS



### KEY TO SYMBOLS

Red symbols indicate internal characteristics.  
Green symbols indicate external characteristics.



Sample Image Used

## COLOR

D E F G H I J Faint Very Light Light

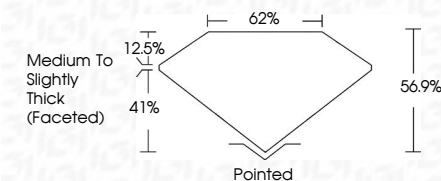
## CLARITY

IF                      VS<sup>1-2</sup>                      VS<sup>1-2</sup>                      S<sup>1-2</sup>                      |<sup>1-3</sup>

Internally Flawless	Very Very Slightly Included	Very Slightly Included	Slightly Included	Included
------------------------	--------------------------------	---------------------------	----------------------	----------

## LABORATORY GROWN DIAMOND REPORT

July 5, 2025	
IGI Report Number	
Description	LABORATORY GROWN DIAMOND
Shape and Cutting Style	MARQUISE BRILLIANT
Measurements	16.12 X 7.47 X 4.25 MM
GRADING RESULTS	
Carat Weight	3.00 CARATS
Color Grade	FANCY VIVID GREEN
Clarity Grade	VVS 2



### ADDITIONAL GRADING INFORMATION

Polish	EXCELLENT
Symmetry	VERY GOOD
Fluorescence	NONE
Inscription(s)	151

Comments: This Laboratory Grown Diamond was created by Chemical Vapor Deposition (CVD) growth process.  
Indications of post-growth treatment.



JULY 5, 2025 IGI Report No. 611121 MARQUESS BRILLIANT	16.12 X 7.47 X 4.25 MM Color: Light Clarity: VS2 Depth: 62% Table: 62% Girdle: Medium To Slightly Thick (faceted)	3.00 CARATS FANCY VIVID GREEN VS 2 62% Medium To Slightly Thick (faceted)	Polished EXCELLENT VERY GOOD NONE 1691
---	--	---	--

Comments:  
 The Laboratory Grown Diamond was created by Chemical Vapor Deposition (CVD) growth process. Indications of post-growth treatment.