



**INTERNATIONAL  
GEMOLOGICAL  
INSTITUTE**

**LABORATORY GROWN DIAMOND REPORT**

June 23, 2025  
 IGI Report Number  
 Description **LABORATORY GROWN DIAMOND**  
 Shape and Cutting Style **OVAL BRILLIANT**  
 Measurements **8.02 X 5.59 X 3.45 MM**

**GRADING RESULTS**

Carat Weight **0.97 CARAT**  
 Color Grade **F**  
 Clarity Grade **VVS 2**

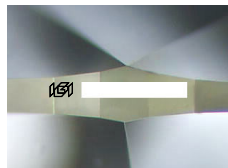
**ADDITIONAL GRADING INFORMATION**

Polish **EXCELLENT**  
 Symmetry **EXCELLENT**  
 Fluorescence **NONE**

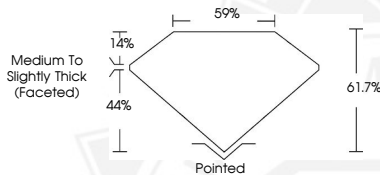
Inscription(s) 


Comments: This Laboratory Grown Diamond was created by  
 Chemical Vapor Deposition (CVD) growth process.  
 Type IIa

**ELECTRONIC COPY**



Sample Image Used



June 23, 2025  
 IGI Report Number  
**OVAL BRILLIANT**  
**LABORATORY GROWN DIAMOND**  
**8.02 X 5.59 X 3.45 MM**  
 Carat Weight **0.97 CARAT**  
 Color Grade **F**  
 Clarity Grade **VVS 2**  
 Polish **EXCELLENT**  
 Symmetry **EXCELLENT**  
 Fluorescence **NONE**  
 Inscription(s)   
 Comments: This Laboratory Grown Diamond was created by  
 Chemical Vapor Deposition (CVD)  
 growth process. Type IIa

June 23, 2025  
 IGI Report Number  
**OVAL BRILLIANT**  
**LABORATORY GROWN DIAMOND**  
**8.02 X 5.59 X 3.45 MM**  
 Carat Weight **0.97 CARAT**  
 Color Grade **F**  
 Clarity Grade **VVS 2**  
 Polish **EXCELLENT**  
 Symmetry **EXCELLENT**  
 Fluorescence **NONE**  
 Inscription(s)   
 Comments: This Laboratory Grown Diamond was created by  
 Chemical Vapor Deposition (CVD)  
 growth process. Type IIa



THIS DOCUMENT WAS PRODUCED WITH THE FOLLOWING SECURITY MEASURES: SPECIAL DOCUMENT PAPER, INK SCREENS, WATERMARK, BACKGROUND DESIGN, HOLOGRAM AND OTHER SECURITY FEATURES NOT LISTED AND DO EXCEED DOCUMENT SECURITY INDUSTRY GUIDELINES.

For terms & conditions and to verify this report, please visit [www.igi.org](http://www.igi.org)