



**ELECTRONIC COPY**

Report verification at [igi.org](http://igi.org)

**DIAMOND REPORT**

February 5, 2026  
IGI Report Number  
Description **NATURAL DIAMOND**  
Shape and Cutting Style **EMERALD CUT**  
Measurements **7.47 X 5.36 X 3.44 MM**

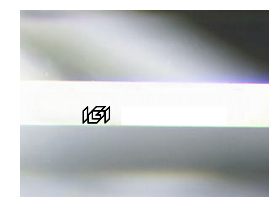
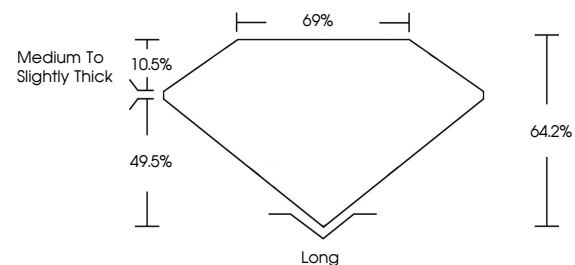
**GRADING RESULTS**

Carat Weight **1.30 CARAT**  
Color Grade **I**  
Clarity Grade **VVS 2**  
Cut Grade **VERY GOOD**

**ADDITIONAL GRADING INFORMATION**

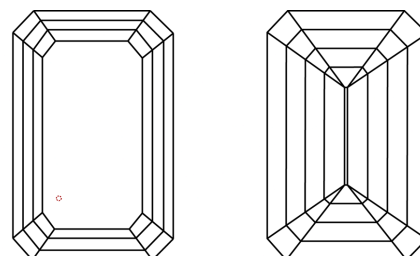
Polish **EXCELLENT**  
Symmetry **VERY GOOD**  
Fluorescence **NONE**  
Inscription(s)

**PROPORTIONS**



Sample Image Used

**CLARITY CHARACTERISTICS**



**KEY TO SYMBOLS**

Red symbols indicate internal characteristics.  
Green symbols indicate external characteristics.

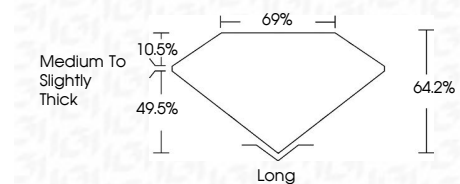
**COLOR**

D - F	G - J	K - M	N - R	S - Z	FANCY
Colorless	Near Colorless	Slightly Tinted	Very Light Color	Light Color	

**CLARITY**

FL	IF	VVS 1-2	VS 1-2	SI 1-2	I 1-3
Flawless	Internally Flawless	Very Very Slightly Included	Very Slightly Included	Slightly Included	Included

February 5, 2026  
IGI Report Number  
Description **NATURAL DIAMOND**  
Shape and Cutting Style **EMERALD CUT**  
Measurements **7.47 X 5.36 X 3.44 MM**  
**GRADING RESULTS**  
Carat Weight **1.30 CARAT**  
Color Grade **I**  
Clarity Grade **VVS 2**  
Cut Grade **VERY GOOD**



**ADDITIONAL GRADING INFORMATION**

Polish **EXCELLENT**  
Symmetry **VERY GOOD**  
Fluorescence **NONE**  
Inscription(s)



**IGI**



February 5, 2026  
IGI Report No  
**EMERALD CUT**  
7.47 X 5.36 X 3.44 MM  
1.30 CARAT  
I  
VVS 2  
VERY GOOD  
64.2%  
69%  
Medium To Slightly Thick  
Long  
EXCELLENT  
VERY GOOD  
NONE