



ELECTRONIC COPY

Report verification at igi.org

DIAMOND REPORT

October 9, 2025
 IGI Report Number
 Description **NATURAL DIAMOND**
 Shape and Cutting Style **SQUARE EMERALD CUT**
 Measurements **5.39 X 5.31 X 3.65 MM**

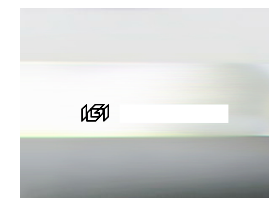
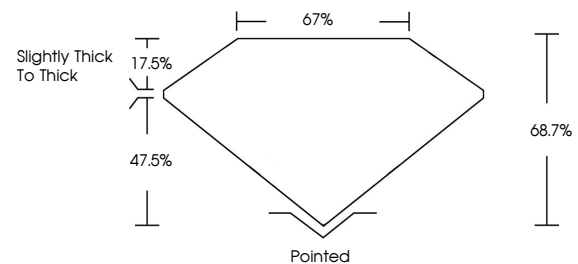
GRADING RESULTS

Carat Weight **1.00 CARAT**
 Color Grade **J**
 Clarity Grade **VVS 2**
 Cut Grade **VERY GOOD**

ADDITIONAL GRADING INFORMATION

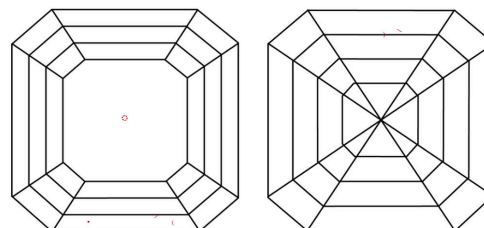
Polish **EXCELLENT**
 Symmetry **EXCELLENT**
 Fluorescence **NONE**
 Inscription(s)

PROPORTIONS



Sample Image Used

CLARITY CHARACTERISTICS



KEY TO SYMBOLS

Red symbols indicate internal characteristics.
 Green symbols indicate external characteristics.

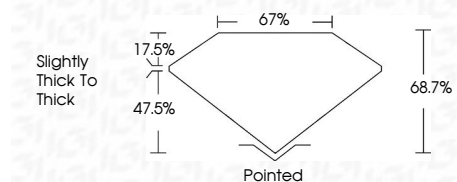
COLOR

D - F	G - J	K - M	N - R	S - Z	FANCY
Colorless	Near Colorless	Slightly Tinted	Very Light Color	Light Color	

CLARITY

IF	VVS ¹⁻²	VS ¹⁻²	SI ¹⁻²	I ¹⁻³
Internally Flawless	Very Very Slightly Included	Very Slightly Included	Slightly Included	Included

October 9, 2025
 IGI Report Number
 Description **NATURAL DIAMOND**
 Shape and Cutting Style **SQUARE EMERALD CUT**
 Measurements **5.39 X 5.31 X 3.65 MM**
GRADING RESULTS
 Carat Weight **1.00 CARAT**
 Color Grade **J**
 Clarity Grade **VVS 2**
 Cut Grade **VERY GOOD**



ADDITIONAL GRADING INFORMATION

Polish **EXCELLENT**
 Symmetry **EXCELLENT**
 Fluorescence **NONE**
 Inscription(s)



IGI



October 9, 2025	1.00 CARAT	J	Pointed
IGI Report No	5.39 X 5.31 X 3.65 MM	VVS 2	EXCELLENT
SQUARE EMERALD CUT	VERY GOOD	68.7%	EXCELLENT
Carat Weight	67%	Slightly thick to thick	NONE
Color Grade			
Clarity Grade			
Cut Grade			
Depth			
Table			
Girdle			
Culet			
Polish			
Symmetry			
Fluorescence			
Inscriptions(s)			