



Report verification at igi.org

ELECTRONIC COPY

DIAMOND REPORT

December 16, 2025
 IGI Report Number
 Description **NATURAL DIAMOND**
 Shape and Cutting Style **PEAR BRILLIANT**
 Measurements **7.66 X 4.70 X 2.89 MM**

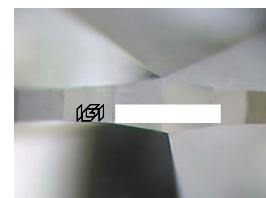
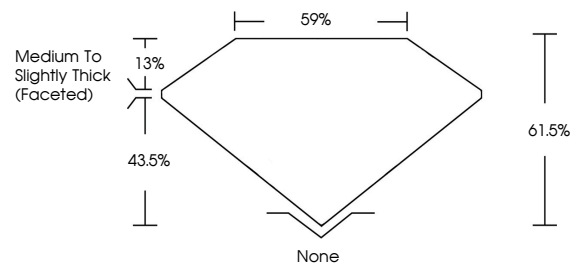
GRADING RESULTS

Carat Weight **0.60 CARAT**
 Color Grade **G**
 Clarity Grade **SI 2**
 Cut Grade **EXCELLENT**

ADDITIONAL GRADING INFORMATION

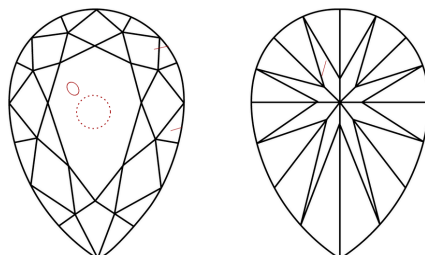
Polish **EXCELLENT**
 Symmetry **VERY GOOD**
 Fluorescence **NONE**
 Inscription(s)

PROPORTIONS



Sample Image Used

CLARITY CHARACTERISTICS



KEY TO SYMBOLS

Red symbols indicate internal characteristics.
 Green symbols indicate external characteristics.

COLOR

D - F	G - J	K - M	N - R	S - Z	FANCY
Colorless	Near Colorless	Slightly Tinted	Very Light Color	Light Color	

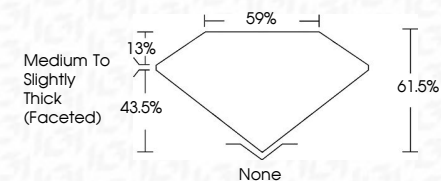
CLARITY

FL	IF	VVS ¹⁻²	VS ¹⁻²	SI ¹⁻²	I ¹⁻³
Flawless	Internally Flawless	Very Very Slightly Included	Very Slightly Included	Slightly Included	Included

December 16, 2025
 IGI Report Number
 Description **NATURAL DIAMOND**
 Shape and Cutting Style **PEAR BRILLIANT**
 Measurements **7.66 X 4.70 X 2.89 MM**

GRADING RESULTS

Carat Weight **0.60 CARAT**
 Color Grade **G**
 Clarity Grade **SI 2**
 Cut Grade **EXCELLENT**



ADDITIONAL GRADING INFORMATION

Polish **EXCELLENT**
 Symmetry **VERY GOOD**
 Fluorescence **NONE**
 Inscription(s)



IGI



December 16, 2025
 IGI Report No
PEAR BRILLIANT
 7.66 X 4.70 X 2.89 MM
 Carat Weight **0.60 CARAT**
 Color Grade **G**
 Clarity Grade **SI 2**
 Cut Grade **EXCELLENT**
 Depth **61.5%**
 Table **59%**
 Girdle **Medium To Slightly Thick (Faceted)**
 Culet **None**
 Polish **EXCELLENT**
 Symmetry **VERY GOOD**
 Fluorescence **NONE**
 Inscription(s)