



ELECTRONIC COPY

Report verification at igi.org



April 1, 2026
 IGI Report Number
 Description **LABORATORY GROWN DIAMOND**
 Shape and Cutting Style **MARQUISE MODIFIED BRILLIANT**
 Measurements **12.56 X 6.08 X 3.89 MM**
GRADING RESULTS
 Carat Weight **2.04 CARATS**
 Color Grade **FANCY VIVID BLUE**
 Clarity Grade **VVS 2**

April 1, 2026
 IGI Report Number
 Description **LABORATORY GROWN DIAMOND**
 Shape and Cutting Style **MARQUISE MODIFIED BRILLIANT**
 Measurements **12.56 X 6.08 X 3.89 MM**

GRADING RESULTS

Carat Weight **2.04 CARATS**
 Color Grade **FANCY VIVID BLUE**
 Clarity Grade **VVS 2**

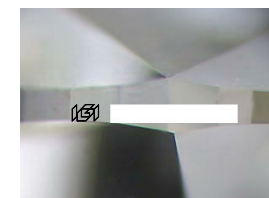
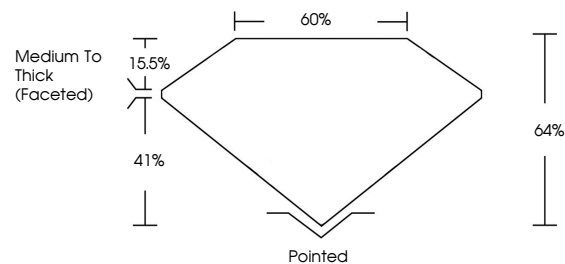
ADDITIONAL GRADING INFORMATION

Polish **EXCELLENT**
 Symmetry **EXCELLENT**
 Fluorescence **NONE**

Inscription(s)

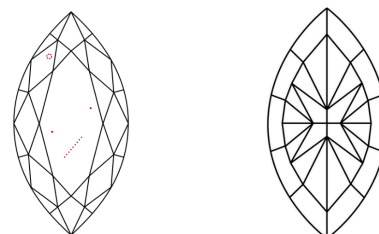
Comments: This Laboratory Grown Diamond was created by Chemical Vapor Deposition (CVD) growth process.
 Indications of post-growth treatment.

PROPORTIONS



Sample Image Used

CLARITY CHARACTERISTICS



KEY TO SYMBOLS

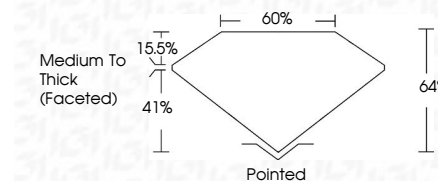
Red symbols indicate internal characteristics.
 Green symbols indicate external characteristics.

COLOR

D E F G H I J Faint Very Light Light

CLARITY

FL	IF	VVS ¹⁻²	VS ¹⁻²	SI ¹⁻²	I ¹⁻³
Flawless	Internally Flawless	Very Very Slightly Included	Very Slightly Included	Slightly Included	Included



ADDITIONAL GRADING INFORMATION

Polish **EXCELLENT**
 Symmetry **EXCELLENT**
 Fluorescence **NONE**

Inscription(s)
 Comments: This Laboratory Grown Diamond was created by Chemical Vapor Deposition (CVD) growth process.
 Indications of post-growth treatment.



April 1, 2026
 IGI Report No **MARQUISE MODIFIED BRILLIANT**
 Carat Weight **2.04 CARATS**
 Color Grade **FANCY VIVID BLUE**
 Clarity Grade **VVS 2**
 Depth **64%**
 Table **60%**
 Girdle **Medium To Thick (Faceted)**
 Culet **Pointed**
 Polish **EXCELLENT**
 Symmetry **EXCELLENT**
 Fluorescence **NONE**
 Inscription(s)

Comments: This Laboratory Grown Diamond was created by Chemical Vapor Deposition (CVD) growth process.
 Indications of post-growth treatment.