



**LABORATORY GROWN DIAMOND REPORT**

March 8, 2026

IGI Report Number

Description

**LABORATORY GROWN DIAMOND**

Shape and Cutting Style

**PEAR BRILLIANT**

Measurements

**5.52 X 3.73 X 2.52 MM**

**GRADING RESULTS**

Carat Weight

**0.30 CARAT**

Color Grade

**H**

Clarity Grade

**VVS 2**

**ADDITIONAL GRADING INFORMATION**

Polish

**VERY GOOD**

Symmetry

**VERY GOOD**

Fluorescence

**NONE**

Inscription(s)

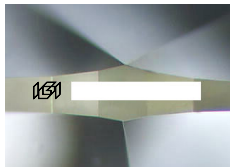


Comments: As Grown - No indication of post-growth treatment.

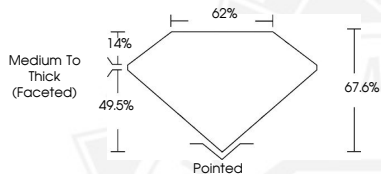
This Laboratory Grown Diamond was created by High Pressure High Temperature (HPHT) growth process.

Type II

Faint Blue



Sample Image Used



March 8, 2026

IGI Report Number

**PEAR BRILLIANT**

**LABORATORY GROWN DIAMOND**

**5.52 X 3.73 X 2.52 MM**

Carat Weight

**0.30 CARAT**

Color Grade

**H**

Clarity Grade

**VVS 2**

Polish

**VERY GOOD**

Symmetry

**VERY GOOD**

Fluorescence

**NONE**

Inscription(s)



Comments: As Grown - No indication of post-growth treatment. This Laboratory Grown Diamond was created by High Pressure High Temperature (HPHT) growth process. Type II Faint Blue

March 8, 2026

IGI Report Number

**PEAR BRILLIANT**

**LABORATORY GROWN DIAMOND**

**5.52 X 3.73 X 2.52 MM**

Carat Weight

**0.30 CARAT**

Color Grade

**H**

Clarity Grade

**VVS 2**

Polish

**VERY GOOD**

Symmetry

**VERY GOOD**

Fluorescence

**NONE**

Inscription(s)



Comments: As Grown - No indication of post-growth treatment. This Laboratory Grown Diamond was created by High Pressure High Temperature (HPHT) growth process. Type II Faint Blue



THIS DOCUMENT WAS PRODUCED WITH THE FOLLOWING SECURITY MEASURES: SPECIAL DOCUMENT PAPER, INK SCREENS, WATERMARK, BACKGROUND DESIGNS, HOLOGRAM AND OTHER SECURITY FEATURES NOT LISTED AND DO EXCEED DOCUMENT SECURITY INDUSTRY GUIDELINES.