



**ELECTRONIC COPY**

Report verification at [igi.org](http://igi.org)

**LABORATORY GROWN DIAMOND REPORT**

March 27, 2026  
 IGI Report Number  
 Description **LABORATORY GROWN DIAMOND**  
 Shape and Cutting Style **HEXAGONAL MIXED CUT**  
 Measurements **14.94 X 7.46 X 4.67 MM**

**GRADING RESULTS**

Carat Weight **3.54 CARATS**  
 Color Grade **E**  
 Clarity Grade **VVS 2**

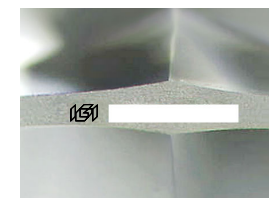
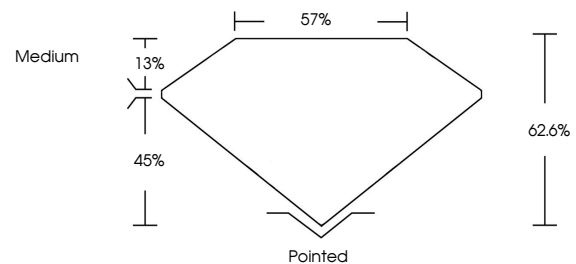
**ADDITIONAL GRADING INFORMATION**

Polish **EXCELLENT**  
 Symmetry **EXCELLENT**  
 Fluorescence **NONE**

Inscription(s)

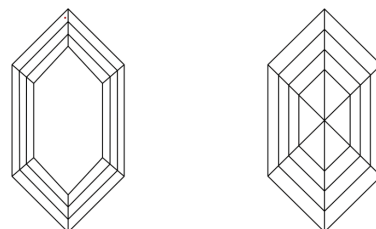
Comments: This Laboratory Grown Diamond was created by Chemical Vapor Deposition (CVD) growth process.  
 Type IIa

**PROPORTIONS**



Sample Image Used

**CLARITY CHARACTERISTICS**



**KEY TO SYMBOLS**

Red symbols indicate internal characteristics.  
 Green symbols indicate external characteristics.

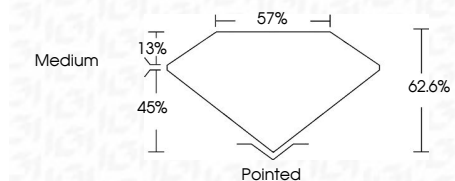
**COLOR**

D E F G H I J Faint Very Light Light

**CLARITY**

FL	IF	VVS <sup>1-2</sup>	VS <sup>1-2</sup>	SI <sup>1-2</sup>	I <sup>1-3</sup>
Flawless	Internally Flawless	Very Very Slightly Included	Very Slightly Included	Slightly Included	Included

March 27, 2026  
 IGI Report Number  
 Description **LABORATORY GROWN DIAMOND**  
 Shape and Cutting Style **HEXAGONAL MIXED CUT**  
 Measurements **14.94 X 7.46 X 4.67 MM**  
**GRADING RESULTS**  
 Carat Weight **3.54 CARATS**  
 Color Grade **E**  
 Clarity Grade **VVS 2**



**ADDITIONAL GRADING INFORMATION**

Polish **EXCELLENT**  
 Symmetry **EXCELLENT**  
 Fluorescence **NONE**

Inscription(s)

Comments: This Laboratory Grown Diamond was created by Chemical Vapor Deposition (CVD) growth process.  
 Type IIa



March 27, 2026	IGI Report No	<b>HEXAGONAL MIXED CUT</b>
14.94 X 7.46 X 4.67 MM	Carat Weight	<b>3.54 CARATS</b>
E	Color Grade	<b>E</b>
VVS 2	Clarity Grade	<b>VVS 2</b>
62.6%	Depth	<b>62.6%</b>
57%	Table	<b>57%</b>
Medium	Grades	<b>Medium</b>
Pointed	Culet	<b>Pointed</b>
EXCELLENT	Polish	<b>EXCELLENT</b>
EXCELLENT	Symmetry	<b>EXCELLENT</b>
NONE	Fluorescence	<b>NONE</b>
	Inscription(s)	

Comments: This Laboratory Grown Diamond was created by Chemical Vapor Deposition (CVD) growth process.  
 Type IIa