



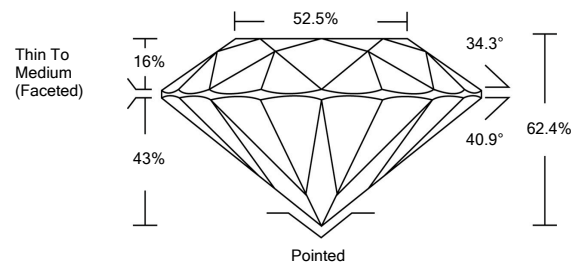
ELECTRONIC COPY

LABORATORY GROWN DIAMOND REPORT

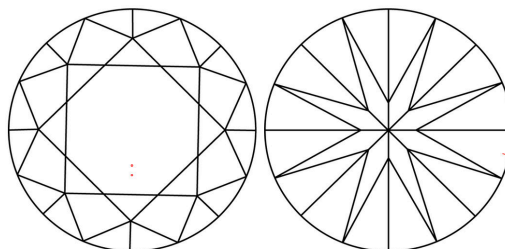
January 21, 2022	
IGI Report Number	
Description	LABORATORY GROWN DIAMOND
Shape and Cutting Style	ROUND BRILLIANT
Measurements	8.61 - 8.63 X 5.38 MM
GRADING RESULTS	
Carat Weight	2.40 CARATS
Color Grade	G
Clarity Grade	VVS 2
Cut Grade	EXCELLENT
ADDITIONAL GRADING INFORMATION	
Polish	EXCELLENT
Symmetry	EXCELLENT
Fluorescence	NONE
Inscription(s)	LABGROWN IGI

Comments: This Laboratory Grown Diamond was created by Chemical Vapor Deposition (CVD) growth process and may include post-growth treatment.
Type IIa

PROPORTIONS



CLARITY CHARACTERISTICS

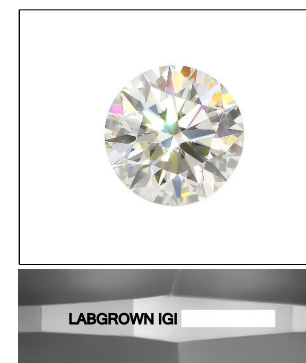


KEY TO SYMBOLS

Red symbols indicate internal characteristics.
Green symbols indicate external characteristics.

GRADING SCALES

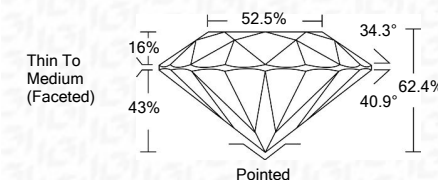
COLOR GRADING SCALE	CL	NC	FT	VL	LT	
	COLORLESS D-F	NEAR COLORLESS G-J	FAINT K-M	VERY LIGHT N-R	LIGHT S-Z	
CLARITY (10x) GRADING SCALE	FL	IF	VVS	VS	SI	I
	FLAWLESS INTERNALLY FLAWLESS	VERY VERY SLIGHTLY INCLUDED	VERY SLIGHTLY INCLUDED	SLIGHTLY INCLUDED	INCLUDED	



LASERSCRIBESM

Sample Image Used

January 21, 2022	
IGI Report Number	
Description	LABORATORY GROWN DIAMOND
Shape and Cutting Style	ROUND BRILLIANT
Measurements	8.61 - 8.63 X 5.38 MM
GRADING RESULTS	
Carat Weight	2.40 CARATS
Color Grade	G
Clarity Grade	VVS 2
Cut Grade	EXCELLENT



ADDITIONAL GRADING INFORMATION	
Polish	EXCELLENT
Symmetry	EXCELLENT
Fluorescence	NONE
Inscription(s)	LABGROWN IGI

Comments: This Laboratory Grown Diamond was created by Chemical Vapor Deposition (CVD) growth process and may include post-growth treatment.
Type IIa



IGI

January 21, 2022	
IGI Report No	
ROUND BRILLIANT	
8.61 - 8.63 X 5.38 MM	
Carat Weight	2.40 CARATS
Color Grade	G
Clarity Grade	VVS 2
Cut Grade	EXCELLENT
Depth	62.4%
Table	62.5%
Girdle	Thin To Medium (Faceted)
Culet	Pointed
Polish	EXCELLENT
Symmetry	EXCELLENT
Fluorescence	NONE
Inscription(s)	LABGROWN IGI

Comments: This Laboratory Grown Diamond was created by Chemical Vapor Deposition (CVD) growth process and may include post-growth treatment.
Type IIa