



**INTERNATIONAL  
GEMOLOGICAL  
INSTITUTE**

**ELECTRONIC COPY**

**LABORATORY GROWN DIAMOND REPORT**

November 15, 2025

IGI Report Number

Description

**LABORATORY GROWN DIAMOND**

Shape and Cutting Style

**CUT CORNERED RECTANGULAR MODIFIED  
BRILLIANT**

Measurements

**5.60 X 4.54 X 3.02 MM**

**GRADING RESULTS**

Carat Weight

**0.68 CARAT**

Color Grade

**G**

Clarity Grade

**VVS 2**

**ADDITIONAL GRADING INFORMATION**

Polish

**VERY GOOD**

Symmetry

**VERY GOOD**

Fluorescence

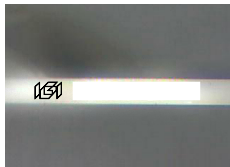
**NONE**

Inscription(s)

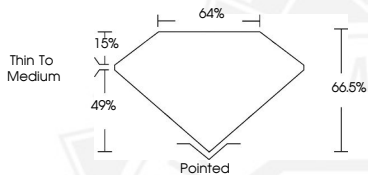
Comments: As Grown - No indication of post-growth treatment.

This Laboratory Grown Diamond was created by High Pressure High Temperature (HPHT) growth process.

Type II



Sample Image Used



November 15, 2025

IGI Report Number

**CUT CORNERED RECTANGULAR  
MODIFIED BRILLIANT**

**LABORATORY GROWN DIAMOND**

**5.60 X 4.54 X 3.02 MM**

Carat Weight

**0.68 CARAT**

Color Grade

**G**

Clarity Grade

**VVS 2**

Polish

**VERY GOOD**

Symmetry

**VERY GOOD**

Fluorescence

**NONE**

Inscription(s)

Comments: As Grown - No indication of post-growth treatment. This Laboratory Grown Diamond was created by High Pressure High Temperature (HPHT) growth process. Type II

November 15, 2025

IGI Report Number

**CUT CORNERED RECTANGULAR  
MODIFIED BRILLIANT**

**LABORATORY GROWN DIAMOND**

**5.60 X 4.54 X 3.02 MM**

Carat Weight

**0.68 CARAT**

Color Grade

**G**

Clarity Grade

**VVS 2**

Polish

**VERY GOOD**

Symmetry

**VERY GOOD**

Fluorescence

**NONE**

Inscription(s)

Comments: As Grown - No indication of post-growth treatment. This Laboratory Grown Diamond was created by High Pressure High Temperature (HPHT) growth process. Type II



THIS DOCUMENT WAS PRODUCED WITH THE FOLLOWING SECURITY MEASURES: SPECIAL DOCUMENT PAPER, INK SCREENS, WATERMARK, BACKGROUND DESIGNS, HOLOGRAM AND OTHER SECURITY FEATURES NOT LISTED AND DO EXCEED DOCUMENT SECURITY INDUSTRY GUIDELINES.

For terms & conditions and to verify this report, please visit [www.igi.org](http://www.igi.org)