



INTERNATIONAL GEMOLOGICAL INSTITUTE

ELECTRONIC COPY

LABORATORY GROWN DIAMOND REPORT

November 3, 2025

IGI Report Number

Description

Shape and Cutting Style

Measurements

LABORATORY GROWN DIAMOND

ROUND BRILLIANT

2.93 - 2.96 X 1.66 MM

GRADING RESULTS

Carat Weight

Color Grade

Clarity Grade

Cut Grade

0.08 CARAT

FANCY INTENSE PINK

VS 1

VERY GOOD

ADDITIONAL GRADING INFORMATION

Polish

Symmetry

Fluorescence

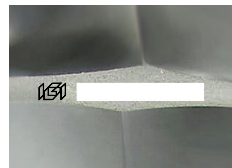
Inscription(s)

VERY GOOD

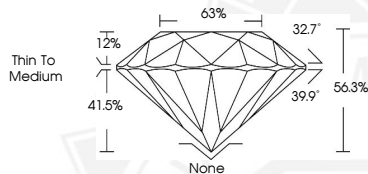
GOOD

STRONG

Comments: This Laboratory Grown Diamond was created by High Pressure High Temperature (HPHT) growth process. Indications of post-growth treatment.



Sample Image Used



November 3, 2025

IGI Report Number

ROUND BRILLIANT

LABORATORY GROWN DIAMOND

2.93 - 2.96 X 1.66 MM

Carat Weight 0.08 CARAT

Color Grade FANCY INTENSE

Clarity Grade PINK

Cut Grade VS 1

Polish VERY GOOD

Symmetry VERY GOOD

Fluorescence GOOD

Inscription(s) STRONG

Comments: This Laboratory Grown Diamond was created by High Pressure High Temperature (HPHT) growth process. Indications of post-growth treatment.

November 3, 2025

IGI Report Number

ROUND BRILLIANT

LABORATORY GROWN DIAMOND

2.93 - 2.96 X 1.66 MM

Carat Weight 0.08 CARAT

Color Grade FANCY INTENSE

Clarity Grade PINK

Cut Grade VS 1

Polish VERY GOOD

Symmetry VERY GOOD

Fluorescence GOOD

Inscription(s) STRONG

Comments: This Laboratory Grown Diamond was created by High Pressure High Temperature (HPHT) growth process. Indications of post-growth treatment.



THIS DOCUMENT WAS PRODUCED WITH THE FOLLOWING SECURITY MEASURES: SPECIAL DOCUMENT PAPER, INK SCREENS, WATERMARK, BACKGROUND DESIGNS, HOLOGRAM AND OTHER SECURITY FEATURES NOT LISTED AND DO EXCEED DOCUMENT SECURITY INDUSTRY GUIDELINES.

For terms & conditions and to verify this report, please visit www.igi.org