



ELECTRONIC COPY

LABORATORY GROWN DIAMOND REPORT

Report verification at igi.org

LABORATORY GROWN DIAMOND REPORT

LABORATORY GROWN DIAMOND REPORT

LABORATORY GROWN DIAMOND REPORT

February 29, 2024
IGI Report Number
Description LABORATORY GROWN DIAMOND
Shape and Cutting Style OVAL BRILLIANT
Measurements 10.18 X 7.24 X 4.58 MM

GRADING RESULTS

Carat Weight 2.16 CARATS
Color Grade E
Clarity Grade VS 1

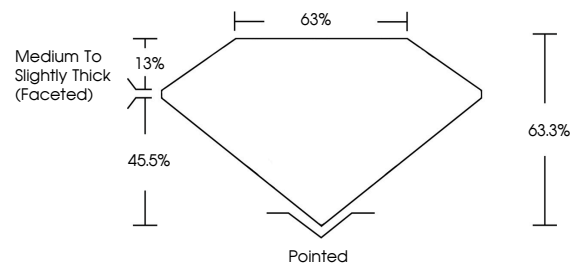
ADDITIONAL GRADING INFORMATION

Polish EXCELLENT
Symmetry EXCELLENT
Fluorescence NONE

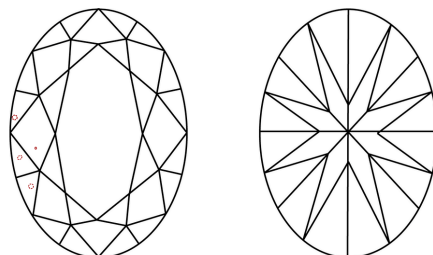
Inscription(s) IGI

Comments: This Laboratory Grown Diamond was created by Chemical Vapor Deposition (CVD) growth process and may include post-growth treatment. Type IIa

PROPORTIONS



CLARITY CHARACTERISTICS



KEY TO SYMBOLS

Red symbols indicate internal characteristics.
Green symbols indicate external characteristics.

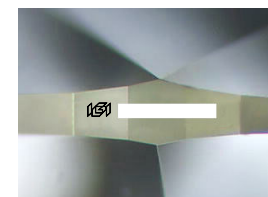
GRADING SCALES

CLARITY

Table with 5 columns: IF, VVS 1-2, VS 1-2, SI 1-2, I 1-3. Row 1: Internally Flawless, Very Very Slightly Included, Very Slightly Included, Slightly Included, Included.

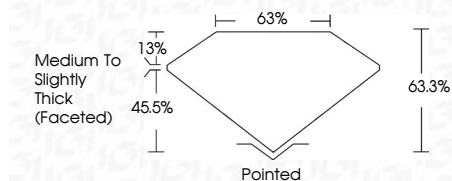
COLOR

Table with 10 columns: D, E, F, G, H, I, J, Faint, Very Light, Light.



Sample Image Used

February 29, 2024
IGI Report Number
Description LABORATORY GROWN DIAMOND
Shape and Cutting Style OVAL BRILLIANT
Measurements 10.18 X 7.24 X 4.58 MM
GRADING RESULTS
Carat Weight 2.16 CARATS
Color Grade E
Clarity Grade VS 1



ADDITIONAL GRADING INFORMATION

Polish EXCELLENT
Symmetry EXCELLENT
Fluorescence NONE
Inscription(s) IGI

Comments: This Laboratory Grown Diamond was created by Chemical Vapor Deposition (CVD) growth process and may include post-growth treatment. Type IIa



Summary of report details including date, report number, description, measurements, grading results, and additional information.

Comments: This Laboratory Grown Diamond was created by Chemical Vapor Deposition (CVD) growth process and may include post-growth treatment. Type IIa