



INTERNATIONAL GEMOLOGICAL INSTITUTE

ELECTRONIC COPY

LABORATORY GROWN DIAMOND REPORT

September 15, 2025

IGI Report Number

Description

Shape and Cutting Style

Measurements

LABORATORY GROWN DIAMOND

ROUND BRILLIANT

5.16 - 5.24 X 3.06 MM

GRADING RESULTS

Carat Weight

Color Grade

Clarity Grade

Cut Grade

0.51 CARAT

G

VVS 2

VERY GOOD

ADDITIONAL GRADING INFORMATION

Polish

Symmetry

Fluorescence

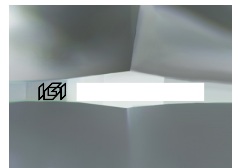
Inscription(s)

VERY GOOD

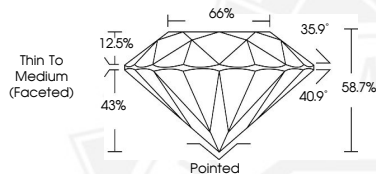
GOOD

NONE

Comments: This Laboratory Grown Diamond was created by Chemical Vapor Deposition (CVD) growth process. Type IIa



Sample Image Used



September 15, 2025

IGI Report Number

ROUND BRILLIANT

LABORATORY GROWN DIAMOND

5.16 - 5.24 X 3.06 MM

Carat Weight 0.51 CARAT

Color Grade G

Clarity Grade VVS 2

Cut Grade VERY GOOD

Polish VERY GOOD

Symmetry GOOD

Fluorescence NONE

Inscription(s) IGI
Comments: This Laboratory Grown Diamond was created by Chemical Vapor Deposition (CVD) growth process. Type IIa

September 15, 2025

IGI Report Number

ROUND BRILLIANT

LABORATORY GROWN DIAMOND

5.16 - 5.24 X 3.06 MM

Carat Weight 0.51 CARAT

Color Grade G

Clarity Grade VVS 2

Cut Grade VERY GOOD

Polish VERY GOOD

Symmetry GOOD

Fluorescence NONE

Inscription(s) IGI
Comments: This Laboratory Grown Diamond was created by Chemical Vapor Deposition (CVD) growth process. Type IIa



THIS DOCUMENT WAS PRODUCED WITH THE FOLLOWING SECURITY MEASURES: SPECIAL DOCUMENT PAPER, INK SCREENS, WATERMARK, BACKGROUND DESIGNS, HOLOGRAM AND OTHER SECURITY FEATURES NOT LISTED AND DO EXCEED DOCUMENT SECURITY INDUSTRY GUIDELINES.

For terms & conditions and to verify this report, please visit www.igi.org