



INTERNATIONAL GEMOLOGICAL INSTITUTE

ELECTRONIC COPY

LABORATORY GROWN DIAMOND REPORT

December 9, 2025

IGI Report Number

Description

Shape and Cutting Style

Measurements

LABORATORY GROWN DIAMOND

ROUND BRILLIANT

5.21 - 5.24 X 3.12 MM

GRADING RESULTS

Carat Weight

Color Grade

Clarity Grade

Cut Grade

0.51 CARAT

I

VS 1

IDEAL

ADDITIONAL GRADING INFORMATION

Polish

Symmetry

Fluorescence

Inscription(s)

VERY GOOD

VERY GOOD

NONE

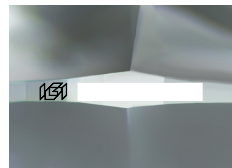
(IGI)

Comments: As Grown - No indication of post-growth treatment.

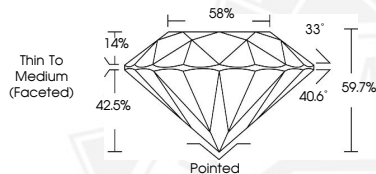
This Laboratory Grown Diamond was created by High Pressure High Temperature (HPHT) growth process.

Type II

Light Blue



Sample Image Used



December 9, 2025

IGI Report Number

ROUND BRILLIANT

LABORATORY GROWN DIAMOND

5.21 - 5.24 X 3.12 MM

Carat Weight

Color Grade

Clarity Grade

Cut Grade

Polish

Symmetry

Fluorescence

Inscription(s)

0.51 CARAT

I

VS 1

IDEAL

VERY GOOD

VERY GOOD

NONE

(IGI)

Comments: As Grown - No indication of post-growth treatment. This Laboratory Grown Diamond was created by High Pressure High Temperature (HPHT) growth process. Type II Light Blue

December 9, 2025

IGI Report Number

ROUND BRILLIANT

LABORATORY GROWN DIAMOND

5.21 - 5.24 X 3.12 MM

Carat Weight

Color Grade

Clarity Grade

Cut Grade

Polish

Symmetry

Fluorescence

Inscription(s)

0.51 CARAT

I

VS 1

IDEAL

VERY GOOD

VERY GOOD

NONE

(IGI)

Comments: As Grown - No indication of post-growth treatment. This Laboratory Grown Diamond was created by High Pressure High Temperature (HPHT) growth process. Type II Light Blue



THIS DOCUMENT WAS PRODUCED WITH THE FOLLOWING SECURITY MEASURES: SPECIAL DOCUMENT PAPER, INK SCREENS, WATERMARK, BACKGROUND DESIGNS, HOLOGRAM AND OTHER SECURITY FEATURES NOT LISTED AND DO EXCEED DOCUMENT SECURITY INDUSTRY GUIDELINES.

For terms & conditions and to verify this report, please visit www.igi.org