

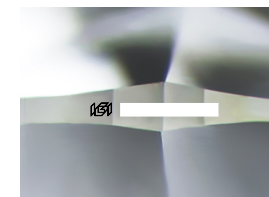
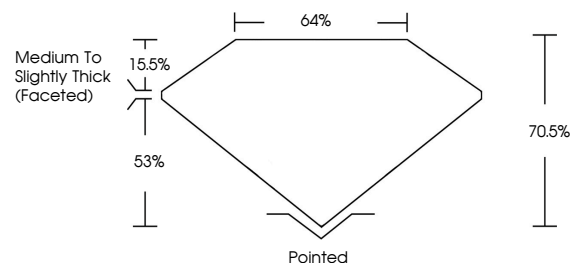


Report verification at [igi.org](http://igi.org)

**ELECTRONIC COPY**

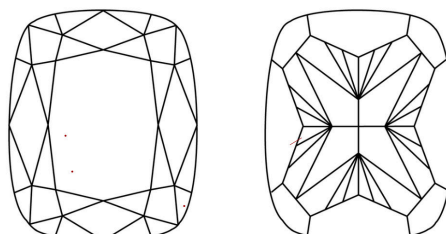
**LABORATORY GROWN DIAMOND REPORT**

**PROPORTIONS**



Sample Image Used

**CLARITY CHARACTERISTICS**



**KEY TO SYMBOLS**

Red symbols indicate internal characteristics.  
Green symbols indicate external characteristics.

**COLOR**

|   |   |   |   |   |   |   |       |            |       |
|---|---|---|---|---|---|---|-------|------------|-------|
| D | E | F | G | H | I | J | Faint | Very Light | Light |
|---|---|---|---|---|---|---|-------|------------|-------|

**CLARITY**

|                     |                             |                        |                   |                  |
|---------------------|-----------------------------|------------------------|-------------------|------------------|
| IF                  | VS <sup>1-2</sup>           | VS <sup>1-2</sup>      | SI <sup>1-2</sup> | I <sup>1-3</sup> |
| Internally Flawless | Very Very Slightly Included | Very Slightly Included | Slightly Included | Included         |



September 11, 2024  
 IGI Report Number  
 Description **LABORATORY GROWN DIAMOND**  
 Shape and Cutting Style **CUSHION BRILLIANT**  
 Measurements **7.46 X 5.72 X 4.03 MM**

**GRADING RESULTS**

Carat Weight **1.51 CARAT**  
 Color Grade **E**  
 Clarity Grade **VS 2**

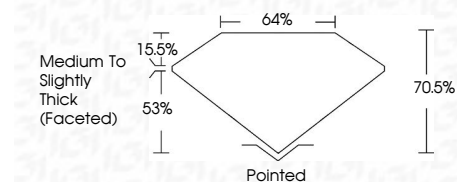
**ADDITIONAL GRADING INFORMATION**

Polish **EXCELLENT**  
 Symmetry **EXCELLENT**  
 Fluorescence **NONE**

Inscription(s)

Comments: This Laboratory Grown Diamond was created by Chemical Vapor Deposition (CVD) growth process. Type IIa

September 11, 2024  
 IGI Report Number  
 Description **LABORATORY GROWN DIAMOND**  
 Shape and Cutting Style **CUSHION BRILLIANT**  
 Measurements **7.46 X 5.72 X 4.03 MM**  
**GRADING RESULTS**  
 Carat Weight **1.51 CARAT**  
 Color Grade **E**  
 Clarity Grade **VS 2**



**ADDITIONAL GRADING INFORMATION**

Polish **EXCELLENT**  
 Symmetry **EXCELLENT**  
 Fluorescence **NONE**

Inscription(s)

Comments: This Laboratory Grown Diamond was created by Chemical Vapor Deposition (CVD) growth process. Type IIa



|                       |                                    |
|-----------------------|------------------------------------|
| September 11, 2024    | 1.51 CARAT                         |
| IGI Report No         | E                                  |
| CUSHION BRILLIANT     | VS 2                               |
| 7.46 X 5.72 X 4.03 MM | 70.5%                              |
| Carat Weight          | 64%                                |
| Color Grade           | Medium to Slightly Thick (Faceted) |
| Clarity Grade         | Pointed                            |
| Depth                 | EXCELLENT                          |
| Table                 | EXCELLENT                          |
| Girdle                | NONE                               |
| Culet                 |                                    |
| Polish                |                                    |
| Symmetry              |                                    |
| Fluorescence          |                                    |
| Inscription(s)        |                                    |

Comments: This Laboratory Grown Diamond was created by Chemical Vapor Deposition (CVD) growth process. Type IIa