



# INTERNATIONAL GEMOLOGICAL INSTITUTE

ELECTRONIC COPY

## LABORATORY GROWN DIAMOND REPORT

November 15, 2025

IGI Report Number

Description

Shape and Cutting Style

Measurements

LABORATORY GROWN DIAMOND

OVAL BRILLIANT

6.55 X 4.51 X 2.76 MM

### GRADING RESULTS

Carat Weight

0.52 CARAT

Color Grade

D

Clarity Grade

VS 2

### ADDITIONAL GRADING INFORMATION

Polish

GOOD

Symmetry

VERY GOOD

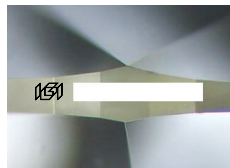
Fluorescence

NONE

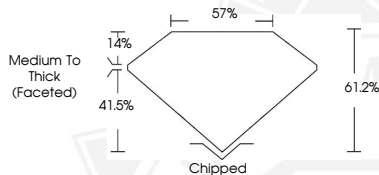
Inscription(s)



Comments: As Grown - No indication of post-growth treatment. This Laboratory Grown Diamond was created by High Pressure High Temperature (HPHT) growth process. Type II



Sample Image Used



November 15, 2025

IGI Report Number

OVAL BRILLIANT

LABORATORY GROWN DIAMOND

6.55 X 4.51 X 2.76 MM

Carat Weight 0.52 CARAT

Color Grade D

Clarity Grade VS 2

Polish GOOD

Symmetry VERY GOOD

Fluorescence NONE

Inscription(s) IGI  
Comments: As Grown - No indication of post-growth treatment. This Laboratory Grown Diamond was created by High Pressure High Temperature (HPHT) growth process. Type II

November 15, 2025

IGI Report Number

OVAL BRILLIANT

LABORATORY GROWN DIAMOND

6.55 X 4.51 X 2.76 MM

Carat Weight 0.52 CARAT

Color Grade D

Clarity Grade VS 2

Polish GOOD

Symmetry VERY GOOD

Fluorescence NONE

Inscription(s) IGI  
Comments: As Grown - No indication of post-growth treatment. This Laboratory Grown Diamond was created by High Pressure High Temperature (HPHT) growth process. Type II



THIS DOCUMENT WAS PRODUCED WITH THE FOLLOWING SECURITY MEASURES: SPECIAL DOCUMENT PAPER, INK SCREENS, WATERMARK, BACKGROUND DESIGNS, HOLOGRAM AND OTHER SECURITY FEATURES NOT LISTED AND DO EXCEED DOCUMENT SECURITY INDUSTRY GUIDELINES.

For terms & conditions and to verify this report, please visit [www.igi.org](http://www.igi.org)