



# INTERNATIONAL GEMOLOGICAL INSTITUTE

## LABORATORY GROWN DIAMOND REPORT

May 28, 2025

IGI Report Number

Description

Shape and Cutting Style

Measurements

LABORATORY GROWN DIAMOND

PRINCESS CUT

4.01 X 3.98 X 2.73 MM

### GRADING RESULTS

Carat Weight

Color Grade

Clarity Grade

0.36 CARAT

D

VS 1

### ADDITIONAL GRADING INFORMATION

Polish

Symmetry

Fluorescence

Inscription(s)

VERY GOOD

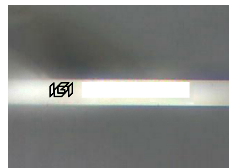
VERY GOOD

NONE

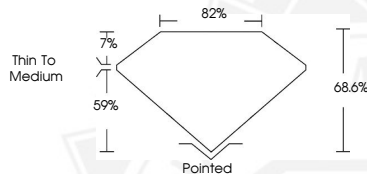


Comments: This Laboratory Grown Diamond was created by Chemical Vapor Deposition (CVD) growth process. Type IIa

ELECTRONIC COPY



Sample Image Used



May 28, 2025

IGI Report Number

PRINCESS CUT

LABORATORY GROWN DIAMOND

4.01 X 3.98 X 2.73 MM

Carat Weight 0.36 CARAT

Color Grade D

Clarity Grade VS 1

Polish VERY GOOD

Symmetry VERY GOOD

Fluorescence NONE

Inscription(s) IGI

Comments: This Laboratory Grown Diamond was created by Chemical Vapor Deposition (CVD) growth process. Type IIa

May 28, 2025

IGI Report Number

PRINCESS CUT

LABORATORY GROWN DIAMOND

4.01 X 3.98 X 2.73 MM

Carat Weight 0.36 CARAT

Color Grade D

Clarity Grade VS 1

Polish VERY GOOD

Symmetry VERY GOOD

Fluorescence NONE

Inscription(s) IGI

Comments: This Laboratory Grown Diamond was created by Chemical Vapor Deposition (CVD) growth process. Type IIa



THIS DOCUMENT WAS PRODUCED WITH THE FOLLOWING SECURITY MEASURES: SPECIAL DOCUMENT PAPER, INK SCREENS, WATERMARK, BACKGROUND DESIGNS, HOLOGRAM AND OTHER SECURITY FEATURES NOT LISTED AND DO EXCEED DOCUMENT SECURITY INDUSTRY GUIDELINES.

For terms & conditions and to verify this report, please visit [www.igi.org](http://www.igi.org)