



ELECTRONIC COPY

LABORATORY GROWN DIAMOND REPORT

Report verification at igi.org

LABORATORY GROWN DIAMOND REPORT

January 31, 2024
IGI Report Number
Description LABORATORY GROWN DIAMOND
Shape and Cutting Style OVAL MODIFIED BRILLIANT
Measurements 8.09 X 6.00 X 4.18 MM

GRADING RESULTS

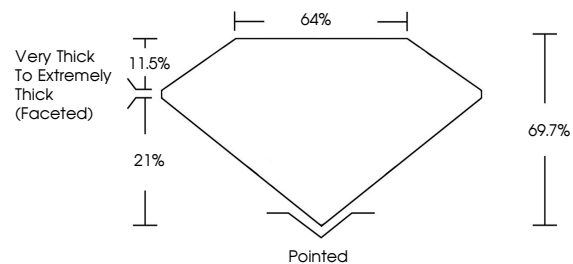
Carat Weight 1.70 CARAT
Color Grade FANCY INTENSE BROWNISH PINK
Clarity Grade VS 1

ADDITIONAL GRADING INFORMATION

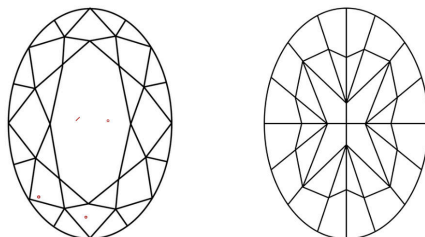
Polish EXCELLENT
Symmetry VERY GOOD
Fluorescence SLIGHT
Inscription(s) IGI

Comments: This Laboratory Grown Diamond was created by Chemical Vapor Deposition (CVD) growth process.
Indications of post-growth treatment.

PROPORTIONS



CLARITY CHARACTERISTICS



KEY TO SYMBOLS

Red symbols indicate internal characteristics.
Green symbols indicate external characteristics.

LABORATORY GROWN DIAMOND REPORT

GRADING SCALES

CLARITY

Table mapping clarity grades (IF, VVS, VS, SI, I) to internal characteristics (Internally Flawless, Very Very Slightly Included, etc.)

COLOR

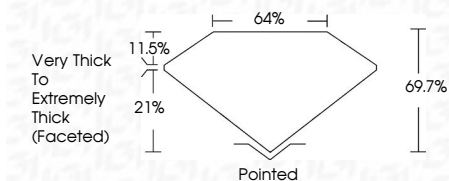
Table mapping color grades (D, E, F, G, H, I, J) to color descriptions (Light Tint, Fancy Light, etc.)

LABORATORY GROWN DIAMOND REPORT

January 31, 2024
IGI Report Number
Description LABORATORY GROWN DIAMOND
Shape and Cutting Style OVAL MODIFIED BRILLIANT
Measurements 8.09 X 6.00 X 4.18 MM

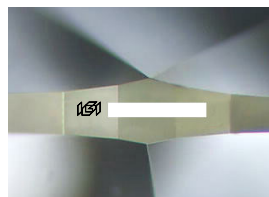
GRADING RESULTS

Carat Weight 1.70 CARAT
Color Grade FANCY INTENSE BROWNISH PINK
Clarity Grade VS 1



ADDITIONAL GRADING INFORMATION

Polish EXCELLENT
Symmetry VERY GOOD
Fluorescence SLIGHT
Inscription(s) IGI
Comments: This Laboratory Grown Diamond was created by Chemical Vapor Deposition (CVD) growth process.
Indications of post-growth treatment.



Sample Image Used



January 31, 2024
IGI Report No. OVAL MODIFIED BRILLIANT
8.09 X 6.00 X 4.18 MM
1.70 CARAT
FANCY INTENSE BROWNISH PINK
Color Grade
VS 1
Clarity Grade
69.7%
Table
44%
Girdle
Very Thick to Extremely Thick (Faceted)
Pointed
Culet
EXCELLENT
Polish
VERY GOOD
Symmetry
SLIGHT
Fluorescence
Inscription(s) IGI

Comments: This Laboratory Grown Diamond was created by Chemical Vapor Deposition (CVD) growth process.
Indications of post-growth treatment.