



INTERNATIONAL GEMOLOGICAL INSTITUTE

ELECTRONIC COPY

LABORATORY GROWN DIAMOND REPORT

October 17, 2025

IGI Report Number

Description

Shape and Cutting Style

Measurements

LABORATORY GROWN DIAMOND

ROUND BRILLIANT

2.96 - 2.98 X 1.79 MM

GRADING RESULTS

Carat Weight

Color Grade

Clarity Grade

Cut Grade

0.09 CARAT

FANCY PINK

VS 2

VERY GOOD

ADDITIONAL GRADING INFORMATION

Polish

Symmetry

Fluorescence

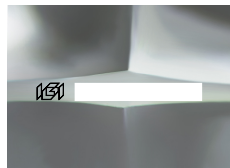
Inscription(s)

GOOD

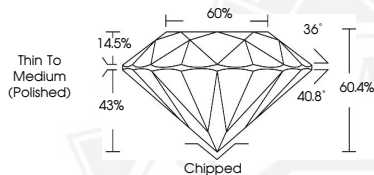
GOOD

SLIGHT

Comments: This Laboratory Grown Diamond was created by High Pressure High Temperature (HPHT) growth process. Indications of post-growth treatment.



Sample Image Used



October 17, 2025

IGI Report Number

ROUND BRILLIANT

LABORATORY GROWN DIAMOND

2.96 - 2.98 X 1.79 MM

Carat Weight

Color Grade

Clarity Grade

Cut Grade

Polish

Symmetry

Fluorescence

Inscription(s)

0.09 CARAT

FANCY PINK

VS 2

VERY GOOD

GOOD

GOOD

SLIGHT

Comments: This Laboratory Grown Diamond was created by High Pressure High Temperature (HPHT) growth process. Indications of post-growth treatment.

October 17, 2025

IGI Report Number

ROUND BRILLIANT

LABORATORY GROWN DIAMOND

2.96 - 2.98 X 1.79 MM

Carat Weight

Color Grade

Clarity Grade

Cut Grade

Polish

Symmetry

Fluorescence

Inscription(s)

0.09 CARAT

FANCY PINK

VS 2

VERY GOOD

GOOD

GOOD

SLIGHT

Comments: This Laboratory Grown Diamond was created by High Pressure High Temperature (HPHT) growth process. Indications of post-growth treatment.



THIS DOCUMENT WAS PRODUCED WITH THE FOLLOWING SECURITY MEASURES: SPECIAL DOCUMENT PAPER, INK SCREENS, WATERMARK, BACKGROUND DESIGNS, HOLOGRAM AND OTHER SECURITY FEATURES NOT LISTED AND DO EXCEED DOCUMENT SECURITY INDUSTRY GUIDELINES.

For terms & conditions and to verify this report, please visit www.igi.org