



ELECTRONIC COPY

Report verification at igi.org

DIAMOND REPORT

July 17, 2024
IGI Report Number
Description: NATURAL DIAMOND
Shape and Cutting Style: ROUND BRILLIANT
Measurements: 10.87 - 10.95 X 6.80 MM

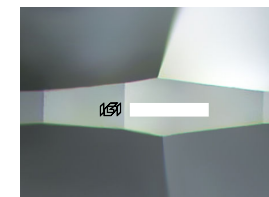
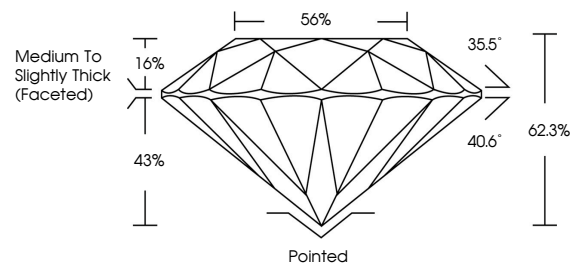
GRADING RESULTS

Carat Weight: 5.01 CARATS
Color Grade: H
Clarity Grade: SI 2
Cut Grade: EXCELLENT

ADDITIONAL GRADING INFORMATION

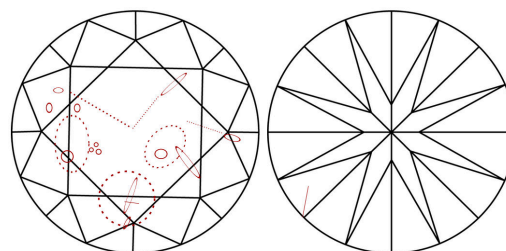
Polish: EXCELLENT
Symmetry: EXCELLENT
Fluorescence: NONE
Inscription(s): IGI
Comments: IDEAL CUT ROUND BRILLIANT

PROPORTIONS



Sample Image Used

CLARITY CHARACTERISTICS



KEY TO SYMBOLS

Red symbols indicate internal characteristics.
Green symbols indicate external characteristics.

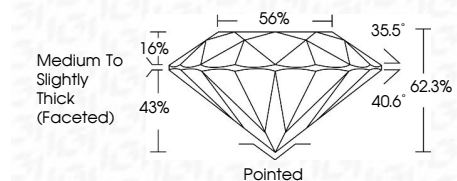
COLOR

Table with 6 columns: D - F, G - J, K - M, N - R, S - Z, FANCY. Row 1: Colorless, Near Colorless, Slightly Tinted, Very Light Color, Light Color.

CLARITY

Table with 5 columns: IF, VS 1-2, VS 1-2, SI 1-2, I 1-3. Row 1: Internally Flawless, Very Very Slightly Included, Very Slightly Included, Slightly Included, Included.

July 17, 2024
IGI Report Number
Description: NATURAL DIAMOND
Shape and Cutting Style: ROUND BRILLIANT
Measurements: 10.87 - 10.95 X 6.80 MM
GRADING RESULTS
Carat Weight: 5.01 CARATS
Color Grade: H
Clarity Grade: SI 2
Cut Grade: EXCELLENT



ADDITIONAL GRADING INFORMATION

Polish: EXCELLENT
Symmetry: EXCELLENT
Fluorescence: NONE
Inscription(s): IGI
Comments: IDEAL CUT ROUND BRILLIANT



July 17, 2024
IGI Report No: ROUND BRILLIANT
10.87 - 10.95 X 6.80 MM
5.01 CARATS
H
SI 2
EXCELLENT
62.3%
56%
Medium to Slightly Thick (Faceted)
Pointed
EXCELLENT
EXCELLENT
NONE
IGI
Comments: IDEAL CUT ROUND BRILLIANT