



ELECTRONIC COPY

Report verification at igi.org

DIAMOND REPORT

January 2, 2026
 IGI Report Number
 Description **NATURAL DIAMOND**
 Shape and Cutting Style **ROUND BRILLIANT**
 Measurements **8.18 - 8.28 X 4.89 MM**

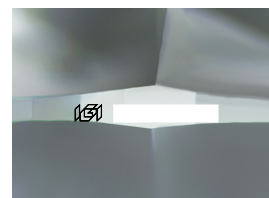
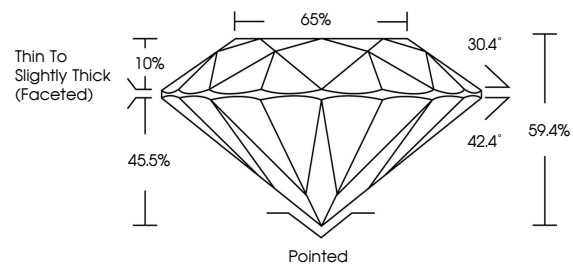
GRADING RESULTS

Carat Weight **2.00 CARATS**
 Color Grade **I**
 Clarity Grade **VS 1**
 Cut Grade **VERY GOOD**

ADDITIONAL GRADING INFORMATION

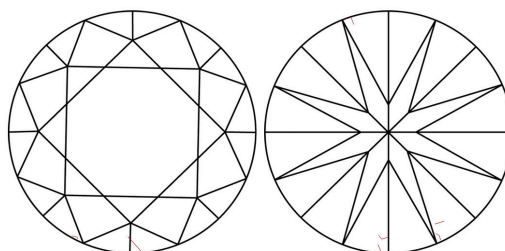
Polish **VERY GOOD**
 Symmetry **GOOD**
 Fluorescence **VERY SLIGHT**
 Inscription(s)

PROPORTIONS



Sample Image Used

CLARITY CHARACTERISTICS



KEY TO SYMBOLS

Red symbols indicate internal characteristics.
 Green symbols indicate external characteristics.

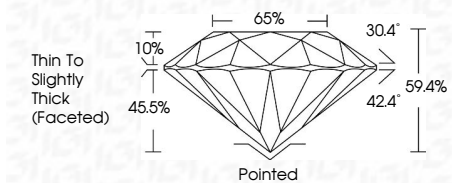
COLOR

D - F	G - J	K - M	N - R	S - Z	FANCY
Colorless	Near Colorless	Slightly Tinted	Very Light Color	Light Color	

CLARITY

FL	IF	VVS 1-2	VS 1-2	SI 1-2	I 1-3
Flawless	Internally Flawless	Very Very Slightly Included	Very Slightly Included	Slightly Included	Included

January 2, 2026
 IGI Report Number
 Description **NATURAL DIAMOND**
 Shape and Cutting Style **ROUND BRILLIANT**
 Measurements **8.18 - 8.28 X 4.89 MM**
GRADING RESULTS
 Carat Weight **2.00 CARATS**
 Color Grade **I**
 Clarity Grade **VS 1**
 Cut Grade **VERY GOOD**



ADDITIONAL GRADING INFORMATION

Polish **VERY GOOD**
 Symmetry **GOOD**
 Fluorescence **VERY SLIGHT**
 Inscription(s)



IGI



January 2, 2026	2.00 CARATS	I	VS 1	65%	Pointed
IGI Report No	8.18 - 8.28 X 4.89 MM	VERY GOOD	59.4%	Thin To Slightly Thick (Faceted)	VERY GOOD
ROUND BRILLIANT					GOOD
Carat Weight					VERY SLIGHT
Color Grade					
Clarity Grade					
Depth					
Table					
Grade					
Culet					
Polish					
Symmetry					
Fluorescence					
Inscriptions(s)					