



LABORATORY GROWN DIAMOND REPORT

November 29, 2025

IGI Report Number

Description

LABORATORY GROWN DIAMOND

Shape and Cutting Style

OVAL BRILLIANT

Measurements

6.43 X 4.16 X 2.44 MM

GRADING RESULTS

Carat Weight

0.43 CARAT

Color Grade

D

Clarity Grade

VVS 1

ADDITIONAL GRADING INFORMATION

Polish

VERY GOOD

Symmetry

GOOD

Fluorescence

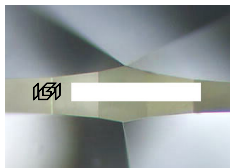
NONE

Inscription(s)

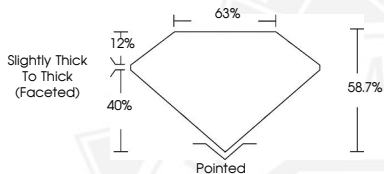


Comments: This Laboratory Grown Diamond was created by Chemical Vapor Deposition (CVD) growth process.

Type IIa



Sample Image Used



November 29, 2025

IGI Report Number

OVAL BRILLIANT

LABORATORY GROWN DIAMOND

6.43 X 4.16 X 2.44 MM

Carat Weight

0.43 CARAT

Color Grade

D

Clarity Grade

VVS 1

Polish

VERY GOOD

Symmetry

GOOD

Fluorescence

NONE

Inscription(s)



Comments: This Laboratory Grown Diamond was created by Chemical Vapor Deposition (CVD) growth process. Type IIa



November 29, 2025

IGI Report Number

OVAL BRILLIANT

LABORATORY GROWN DIAMOND

6.43 X 4.16 X 2.44 MM

Carat Weight

0.43 CARAT

Color Grade

D

Clarity Grade

VVS 1

Polish

VERY GOOD

Symmetry

GOOD

Fluorescence

NONE

Inscription(s)



Comments: This Laboratory Grown Diamond was created by Chemical Vapor Deposition (CVD) growth process. Type IIa



THIS DOCUMENT WAS PRODUCED WITH THE FOLLOWING SECURITY MEASURES: SPECIAL DOCUMENT PAPER, INK SCREENS, WATERMARK, BACKGROUND DESIGNS, HOLOGRAM AND OTHER SECURITY FEATURES NOT LISTED AND DO EXCEED DOCUMENT SECURITY INDUSTRY GUIDELINES.