



ELECTRONIC COPY

Report verification at igi.org

LABORATORY GROWN DIAMOND REPORT

October 10, 2025  
 IGI Report Number  
 Description **LABORATORY GROWN DIAMOND**  
 Shape and Cutting Style **ROUND BRILLIANT**  
 Measurements **6.39 - 6.43 X 4.09 MM**

**GRADING RESULTS**

Carat Weight **1.03 CARAT**  
 Color Grade **FANCY INTENSE PINK**  
 Clarity Grade **VS 1**  
 Cut Grade **VERY GOOD**

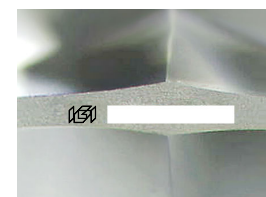
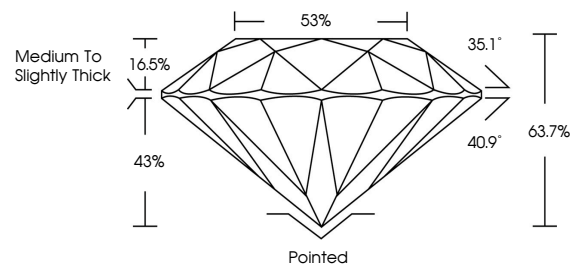
ADDITIONAL GRADING INFORMATION

Polish **EXCELLENT**  
 Symmetry **EXCELLENT**  
 Fluorescence **STRONG**

Inscription(s)

Comments:  
 Secondary color: Orange

PROPORTIONS



Sample Image Used

COLOR

D E F G H I J Faint Very Light Light

CLARITY

FL IF VS<sup>1-2</sup> VS<sup>1-2</sup> SI<sup>1-2</sup> I<sup>1-3</sup>

Flawless Internally Flawless Very Very Slightly Included Very Slightly Included Slightly Included Included

October 10, 2025  
 IGI Report Number  
 Description **LABORATORY GROWN DIAMOND**  
 Shape and Cutting Style **ROUND BRILLIANT**  
 Measurements **6.39 - 6.43 X 4.09 MM**

**GRADING RESULTS**

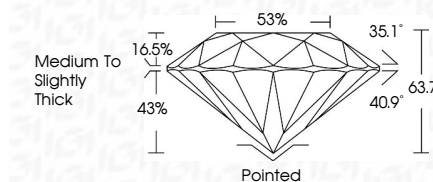
Carat Weight **1.03 CARAT**  
 Color Grade **FANCY INTENSE PINK**  
 Clarity Grade **VS 1**  
 Cut Grade **VERY GOOD**

ADDITIONAL GRADING INFORMATION

Polish **EXCELLENT**  
 Symmetry **EXCELLENT**  
 Fluorescence **STRONG**

Inscription(s)

Comments:  
 Secondary color: Orange



IGI

October 10, 2025	1.03 CARAT	Pointed
IGI Report No	FANCY INTENSE PINK	EXCELLENT
ROUND BRILLIANT	VS 1	EXCELLENT
6.39 - 6.43 X 4.09 MM	VERY GOOD	STRONG
Carat Weight	63.7%	
Color Grade	88%	
Clarity Grade	Medium To Slightly Thick	
Depth		
Table		
Graile		
Culet		
Polish		
Symmetry		
Fluorescence		
Inscription(s)		
Comments:		
Secondary color: Orange		