



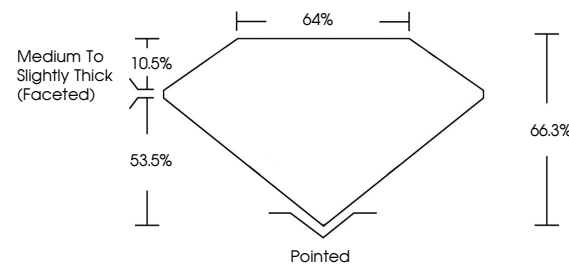
**ELECTRONIC COPY**

**LABORATORY GROWN DIAMOND REPORT**

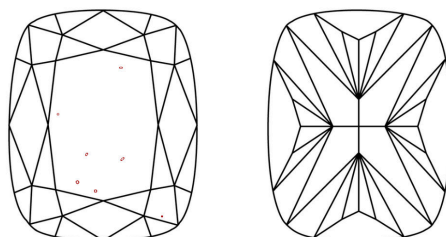
**LG**

Report verification at [igi.org](http://igi.org)

**PROPORTIONS**



**CLARITY CHARACTERISTICS**



**KEY TO SYMBOLS**

Red symbols indicate internal characteristics.  
Green symbols indicate external characteristics.

**LABORATORY GROWN  
DIAMOND REPORT**

**GRADING SCALES**

**CLARITY**

| IF                     | VVS <sup>1-2</sup>             | VS <sup>1-2</sup>         | SI <sup>1-2</sup>    | I <sup>1-3</sup> |
|------------------------|--------------------------------|---------------------------|----------------------|------------------|
| Internally<br>Flawless | Very Very<br>Slightly Included | Very<br>Slightly Included | Slightly<br>Included | Included         |

**COLOR**

| D | E | F | G | H | I | J | Faint | Very Light | Light |
|---|---|---|---|---|---|---|-------|------------|-------|
|---|---|---|---|---|---|---|-------|------------|-------|

**LABORATORY GROWN DIAMOND REPORT**

December 18, 2023

IGI Report Number

Description

Shape and Cutting Style

Measurements

**GRADING RESULTS**

Carat Weight

Color Grade

Clarity Grade

**LG**

**LABORATORY GROWN  
DIAMOND**

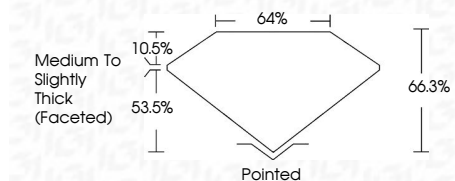
**CUSHION BRILLIANT**

**10.80 X 8.66 X 5.74 MM**

**4.01 CARATS**

**H**

**VS 2**



**ADDITIONAL GRADING INFORMATION**

Polish

Symmetry

Fluorescence

Inscription(s)

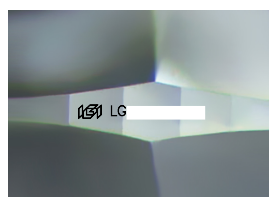
**EXCELLENT**

**EXCELLENT**

**NONE**

**IGI LG**

Comments: This Laboratory Grown Diamond was created by Chemical Vapor Deposition (CVD) growth process and may include post-growth treatment. Type IIa



Sample Image Used



**IGI**

|                        |             |   |      |       |     |                                    |         |           |           |      |        |
|------------------------|-------------|---|------|-------|-----|------------------------------------|---------|-----------|-----------|------|--------|
| December 18, 2023      | 4.01 CARATS | H | VS 2 | 66.3% | 64% | Medium to Slightly Thick (Faceted) | Pointed | EXCELLENT | EXCELLENT | NONE | IGI LG |
| IGI Report No LG       |             |   |      |       |     |                                    |         |           |           |      |        |
| CUSHION BRILLIANT      |             |   |      |       |     |                                    |         |           |           |      |        |
| 10.80 X 8.66 X 5.74 MM |             |   |      |       |     |                                    |         |           |           |      |        |
| Carat Weight           |             |   |      |       |     |                                    |         |           |           |      |        |
| Color Grade            |             |   |      |       |     |                                    |         |           |           |      |        |
| Clarity Grade          |             |   |      |       |     |                                    |         |           |           |      |        |
| Table                  |             |   |      |       |     |                                    |         |           |           |      |        |
| Girdle                 |             |   |      |       |     |                                    |         |           |           |      |        |
| Culet                  |             |   |      |       |     |                                    |         |           |           |      |        |
| Polish                 |             |   |      |       |     |                                    |         |           |           |      |        |
| Symmetry               |             |   |      |       |     |                                    |         |           |           |      |        |
| Fluorescence           |             |   |      |       |     |                                    |         |           |           |      |        |
| Inscription(s)         |             |   |      |       |     |                                    |         |           |           |      |        |

Comments: This Laboratory Grown Diamond was created by Chemical Vapor Deposition (CVD) growth process and may include post-growth treatment. Type IIa