



ELECTRONIC COPY

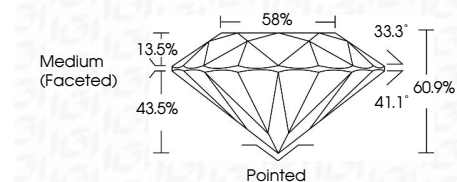
Report verification at igi.org



May 28, 2026
IGI Report Number
Description LABORATORY GROWN DIAMOND

Shape and Cutting Style ROUND BRILLIANT
Measurements 8.25 - 8.30 X 5.04 MM

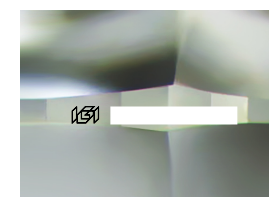
GRADING RESULTS
Carat Weight 2.11 CARATS
Color Grade D
Clarity Grade VS 1
Cut Grade IDEAL



ADDITIONAL GRADING INFORMATION
Polish EXCELLENT
Symmetry EXCELLENT
Fluorescence NONE
Inscription(s) IGI
Comments: This Laboratory Grown Diamond was created by Chemical Vapor Deposition (CVD) growth process. Type IIa

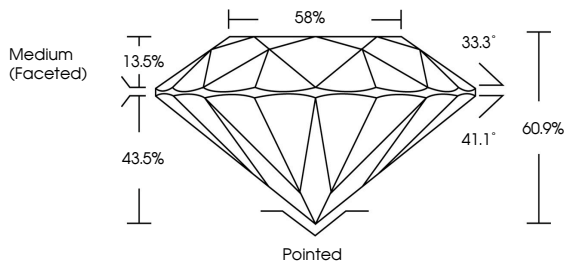


May 28, 2026
IGI Report No. 8.25 - 8.30 X 5.04 MM
ROUND BRILLIANT
2.11 CARATS
Color Grade D
Clarity Grade VS 1
Depth 60.9%
Table 58%
Girdle Medium (Faceted)
Culet Pointed
Polish EXCELLENT
Symmetry EXCELLENT
Fluorescence NONE
Inscriptions(s) IGI
Comments: This Laboratory Grown Diamond was created by Chemical Vapor Deposition (CVD) growth process. Type IIa

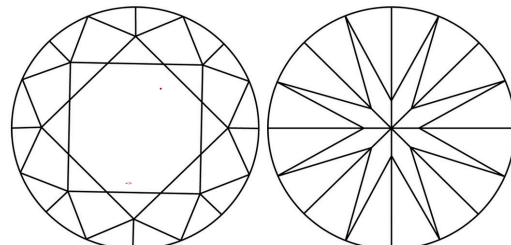


Sample Image Used

PROPORTIONS



CLARITY CHARACTERISTICS



KEY TO SYMBOLS
Red symbols indicate internal characteristics.
Green symbols indicate external characteristics.

Table with columns D, E, F, G, H, I, J, Faint, Very Light, Light

Table with columns FL, IF, VS 1-2, VS 1-2, SI 1-2, I 1-3



May 28, 2026
IGI Report Number
Description LABORATORY GROWN DIAMOND
Shape and Cutting Style ROUND BRILLIANT
Measurements 8.25 - 8.30 X 5.04 MM

GRADING RESULTS
Carat Weight 2.11 CARATS
Color Grade D
Clarity Grade VS 1
Cut Grade IDEAL

ADDITIONAL GRADING INFORMATION
Polish EXCELLENT
Symmetry EXCELLENT
Fluorescence NONE
Inscription(s) IGI

Comments: This Laboratory Grown Diamond was created by Chemical Vapor Deposition (CVD) growth process. Type IIa