



ELECTRONIC COPY

Report verification at igi.org

LABORATORY GROWN DIAMOND REPORT

November 22, 2025
 IGI Report Number
 Description **LABORATORY GROWN DIAMOND**
 Shape and Cutting Style **CUSHION MIXED CUT**
 Measurements **10.71 X 7.32 X 4.83 MM**
GRADING RESULTS
 Carat Weight **3.52 CARATS**
 Color Grade **E**
 Clarity Grade **VS 1**

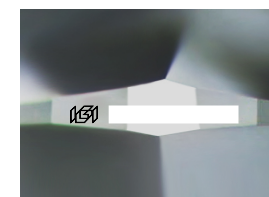
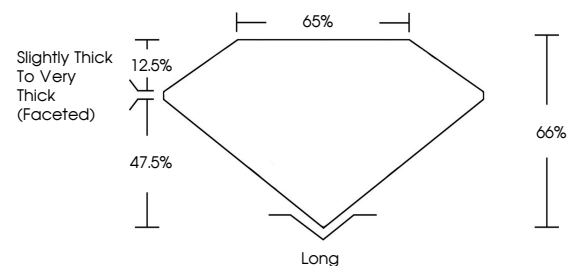
ADDITIONAL GRADING INFORMATION

Polish **EXCELLENT**
 Symmetry **EXCELLENT**
 Fluorescence **NONE**

Inscription(s) 

Comments: This Laboratory Grown Diamond was created by Chemical Vapor Deposition (CVD) growth process.
 Type IIa

PROPORTIONS



Sample Image Used

COLOR

D E F G H I J Faint Very Light Light

CLARITY

FL	IF	VS ¹⁻²	VS ¹⁻²	SI ¹⁻²	I ¹⁻³
Flawless	Internally Flawless	Very Very Slightly Included	Very Slightly Included	Slightly Included	Included

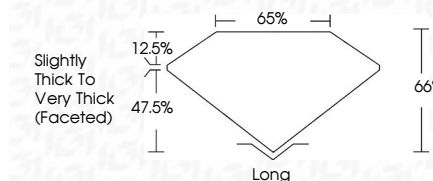
November 22, 2025
 IGI Report Number
 Description **LABORATORY GROWN DIAMOND**
 Shape and Cutting Style **CUSHION MIXED CUT**
 Measurements **10.71 X 7.32 X 4.83 MM**
GRADING RESULTS
 Carat Weight **3.52 CARATS**
 Color Grade **E**
 Clarity Grade **VS 1**

ADDITIONAL GRADING INFORMATION

Polish **EXCELLENT**
 Symmetry **EXCELLENT**
 Fluorescence **NONE**

Inscription(s) 

Comments: This Laboratory Grown Diamond was created by Chemical Vapor Deposition (CVD) growth process.
 Type IIa



November 22, 2025
 IGI Report No
CUSHION MIXED CUT
 10.71 X 7.32 X 4.83 MM
3.52 CARATS
 E
 VS 1
 66%
 65%
 Slightly Thick To Very Thick (Faceted)
 Long
 EXCELLENT
 EXCELLENT
 NONE
 IGI
 Comments: This Laboratory Grown Diamond was created by Chemical Vapor Deposition (CVD) growth process.
 Type IIa