



INTERNATIONAL GEMOLOGICAL INSTITUTE

ELECTRONIC COPY

LABORATORY GROWN DIAMOND REPORT

November 16, 2024

IGI Report Number

Description

Shape and Cutting Style

Measurements

LABORATORY GROWN DIAMOND

MARQUISE BRILLIANT

6.97 X 3.00 X 1.83 MM

GRADING RESULTS

Carat Weight

0.21 CARAT

Color Grade

FANCY INTENSE PINK

Clarity Grade

SI 2

ADDITIONAL GRADING INFORMATION

Polish

VERY GOOD

Symmetry

VERY GOOD

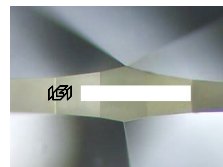
Fluorescence

SLIGHT

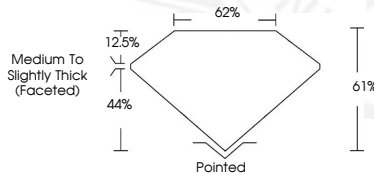
Inscription(s)



Comments: This Laboratory Grown Diamond was created by High Pressure High Temperature (HPHT) growth process. Indications of post-growth treatment.



Sample Image Used



November 16, 2024

IGI Report Number

MARQUISE BRILLIANT

LABORATORY GROWN DIAMOND

6.97 X 3.00 X 1.83 MM

Carat Weight 0.21 CARAT

Color Grade FANCY INTENSE PINK

Clarity Grade SI 2

Polish VERY GOOD

Symmetry VERY GOOD

Fluorescence SLIGHT

Inscription(s) IGI

Comments: This Laboratory Grown Diamond was created by High Pressure High Temperature (HPHT) growth process. Indications of post-growth treatment.



November 16, 2024

IGI Report Number

MARQUISE BRILLIANT

LABORATORY GROWN DIAMOND

6.97 X 3.00 X 1.83 MM

Carat Weight 0.21 CARAT

Color Grade FANCY INTENSE PINK

Clarity Grade SI 2

Polish VERY GOOD

Symmetry VERY GOOD

Fluorescence SLIGHT

Inscription(s) IGI

Comments: This Laboratory Grown Diamond was created by High Pressure High Temperature (HPHT) growth process. Indications of post-growth treatment.



THIS DOCUMENT WAS PRODUCED WITH THE FOLLOWING SECURITY MEASURES: SPECIAL DOCUMENT PAPER, PINK SCREENS, WATERMARK BACKGROUND DESIGN, HOLOGRAM AND OTHER SECURITY FEATURES NOT LISTED AND DO EXCEED DOCUMENT SECURITY INDUSTRY GUIDELINES.

For terms & conditions and to verify this report, please visit www.igi.org