



ELECTRONIC COPY

Report verification at igi.org



November 12, 2025
 IGI Report Number
 Description **LABORATORY GROWN DIAMOND**
 Shape and Cutting Style **MODIFIED MARQUISE STEP CUT**
 Measurements **12.89 X 6.53 X 3.46 MM**
GRADING RESULTS
 Carat Weight **2.07 CARATS**
 Color Grade **FANCY VIVID BLUE**
 Clarity Grade **VS 1**

LABORATORY GROWN DIAMOND REPORT

November 12, 2025
 IGI Report Number
 Description **LABORATORY GROWN DIAMOND**
 Shape and Cutting Style **MODIFIED MARQUISE STEP CUT**
 Measurements **12.89 X 6.53 X 3.46 MM**

GRADING RESULTS

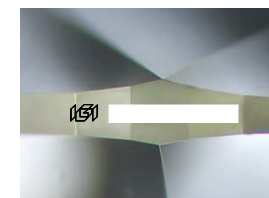
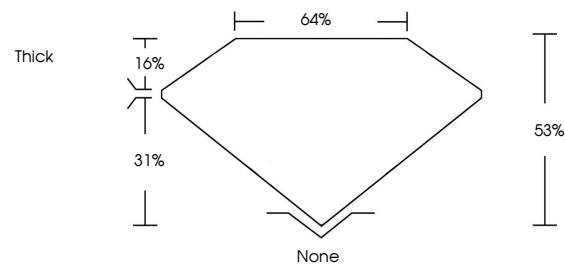
Carat Weight **2.07 CARATS**
 Color Grade **FANCY VIVID BLUE**
 Clarity Grade **VS 1**

ADDITIONAL GRADING INFORMATION

Polish **EXCELLENT**
 Symmetry **VERY GOOD**
 Fluorescence **NONE**
 Inscription(s)

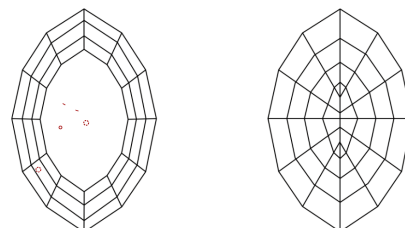
Comments: This Laboratory Grown Diamond was created by Chemical Vapor Deposition (CVD) growth process.
 Indications of post-growth treatment.

PROPORTIONS



Sample Image Used

CLARITY CHARACTERISTICS



KEY TO SYMBOLS

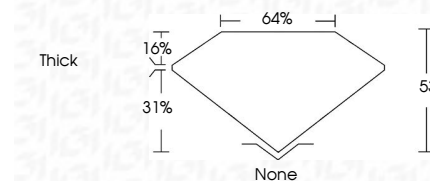
Red symbols indicate internal characteristics.
 Green symbols indicate external characteristics.

COLOR

D E F G H I J Faint Very Light Light

CLARITY

FL	IF	VS ¹⁻²	VS ¹⁻²	SI ¹⁻²	I ¹⁻³
Flawless	Internally Flawless	Very Very Slightly Included	Very Slightly Included	Slightly Included	Included



ADDITIONAL GRADING INFORMATION

Polish **EXCELLENT**
 Symmetry **VERY GOOD**
 Fluorescence **NONE**
 Inscription(s)
 Comments: This Laboratory Grown Diamond was created by Chemical Vapor Deposition (CVD) growth process.
 Indications of post-growth treatment.



November 12, 2025
 IGI Report No
MODIFIED MARQUISE STEP CUT
2.07 CARATS
 Carat Weight
 Color Grade **FANCY VIVID BLUE**
 Clarity Grade **VS 1**
 Depth **53%**
 Table **64%**
 Girdle
 Thick
 None
 Polish **EXCELLENT**
 Symmetry **VERY GOOD**
 Fluorescence **NONE**
 Inscription(s)

Comments: This Laboratory Grown Diamond was created by Chemical Vapor Deposition (CVD) growth process.
 Indications of post-growth treatment.