



LABORATORY GROWN DIAMOND REPORT

December 5, 2025

IGI Report Number

Description

LABORATORY GROWN DIAMOND

Shape and Cutting Style

HALF MOON BRILLIANT

Measurements

6.73 X 4.16 X 2.69 MM

GRADING RESULTS

Carat Weight

0.50 CARAT

Color Grade

D

Clarity Grade

VVS 1

ADDITIONAL GRADING INFORMATION

Polish

VERY GOOD

Symmetry

VERY GOOD

Fluorescence

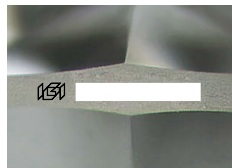
NONE

Inscription(s)

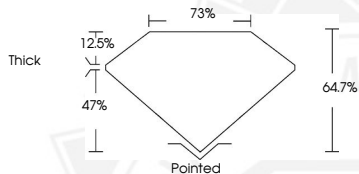


Comments: This Laboratory Grown Diamond was created by Chemical Vapor Deposition (CVD) growth process.

Type IIa



Sample Image Used



December 5, 2025

IGI Report Number

HALF MOON BRILLIANT

LABORATORY GROWN DIAMOND

6.73 X 4.16 X 2.69 MM

Carat Weight

0.50 CARAT

Color Grade

D

Clarity Grade

VVS 1

Polish

VERY GOOD

Symmetry

VERY GOOD

Fluorescence

NONE

Inscription(s)



Comments: This Laboratory Grown Diamond was created by Chemical Vapor Deposition (CVD) growth process. Type IIa

December 5, 2025

IGI Report Number

HALF MOON BRILLIANT

LABORATORY GROWN DIAMOND

6.73 X 4.16 X 2.69 MM

Carat Weight

0.50 CARAT

Color Grade

D

Clarity Grade

VVS 1

Polish

VERY GOOD

Symmetry

VERY GOOD

Fluorescence

NONE

Inscription(s)



Comments: This Laboratory Grown Diamond was created by Chemical Vapor Deposition (CVD) growth process. Type IIa



THIS DOCUMENT WAS PRODUCED WITH THE FOLLOWING SECURITY MEASURES: SPECIAL DOCUMENT PAPER, INK SCREENS, WATERMARK, BACKGROUND DESIGNS, HOLOGRAM AND OTHER SECURITY FEATURES NOT LISTED AND DO EXCEED DOCUMENT SECURITY INDUSTRY GUIDELINES.