



LABORATORY GROWN DIAMOND REPORT

December 11, 2025

IGI Report Number

Description

LABORATORY GROWN DIAMOND

Shape and Cutting Style

ROUND BRILLIANT

Measurements

5.14 - 5.17 X 3.08 MM

GRADING RESULTS

Carat Weight

0.51 CARAT

Color Grade

E

Clarity Grade

VVS 2

Cut Grade

IDEAL

ADDITIONAL GRADING INFORMATION

Polish

VERY GOOD

Symmetry

VERY GOOD

Fluorescence

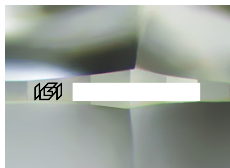
NONE

Inscription(s)

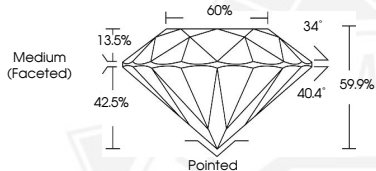


Comments: This Laboratory Grown Diamond was created by
Chemical Vapor Deposition (CVD) growth process.

Type IIa



Sample Image Used



December 11, 2025

IGI Report Number

ROUND BRILLIANT

LABORATORY GROWN DIAMOND

5.14 - 5.17 X 3.08 MM

Carat Weight

0.51 CARAT

Color Grade

E

Clarity Grade

VVS 2

Cut Grade

IDEAL

Polish

VERY GOOD

Symmetry

VERY GOOD

Fluorescence

NONE

Inscription(s)



Comments: This Laboratory Grown
Diamond was created by
Chemical Vapor Deposition (CVD)
growth process. Type IIa

December 11, 2025

IGI Report Number

ROUND BRILLIANT

LABORATORY GROWN DIAMOND

5.14 - 5.17 X 3.08 MM

Carat Weight

0.51 CARAT

Color Grade

E

Clarity Grade

VVS 2

Cut Grade

IDEAL

Polish

VERY GOOD

Symmetry

VERY GOOD

Fluorescence

NONE

Inscription(s)



Comments: This Laboratory Grown
Diamond was created by
Chemical Vapor Deposition (CVD)
growth process. Type IIa



THIS DOCUMENT WAS PRODUCED WITH THE FOLLOWING SECURITY MEASURES: SPECIAL DOCUMENT PAPER, INK SCREENS, WATERMARK, BACKGROUND DESIGNS, HOLOGRAM AND OTHER SECURITY FEATURES NOT LISTED AND DO EXCEED DOCUMENT SECURITY INDUSTRY GUIDELINES.