



ELECTRONIC COPY

Report verification at igi.org



October 28, 2025
IGI Report Number
Description LABORATORY GROWN DIAMOND
Shape and Cutting Style PEAR BRILLIANT
Measurements 13.19 X 8.54 X 5.20 MM
GRADING RESULTS
Carat Weight 3.50 CARATS
Color Grade FANCY INTENSE PINK
Clarity Grade VVS 2

October 28, 2025
IGI Report Number
Description LABORATORY GROWN DIAMOND
Shape and Cutting Style PEAR BRILLIANT
Measurements 13.19 X 8.54 X 5.20 MM

GRADING RESULTS

Carat Weight 3.50 CARATS
Color Grade FANCY INTENSE PINK
Clarity Grade VVS 2

ADDITIONAL GRADING INFORMATION

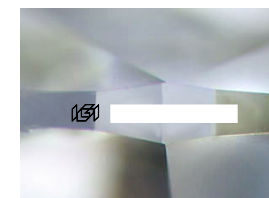
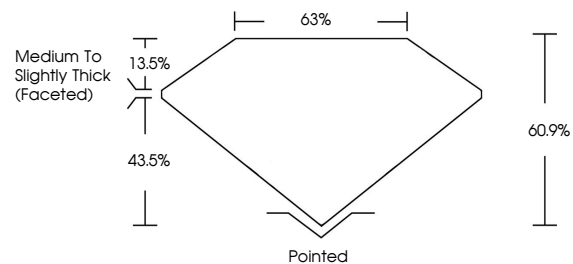
Polish EXCELLENT
Symmetry EXCELLENT
Fluorescence SLIGHT

Inscription(s) IGI

Comments: This Laboratory Grown Diamond was created by Chemical Vapor Deposition (CVD) growth process. Indications of post-growth treatment.

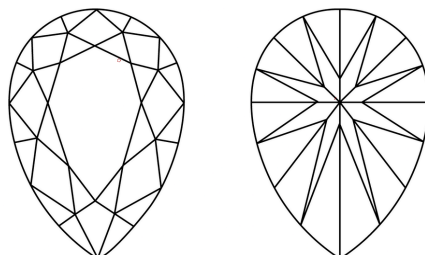
Secondary color: Brown

PROPORTIONS



Sample Image Used

CLARITY CHARACTERISTICS



KEY TO SYMBOLS

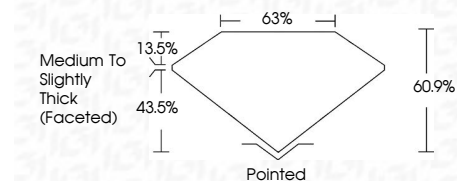
Red symbols indicate internal characteristics.
Green symbols indicate external characteristics.

COLOR

D E F G H I J Faint Very Light Light

CLARITY

FL IF VVS 1-2 VS 1-2 SI 1-2 I 1-3
Flawless Internally Flawless Very Very Slightly Included Very Slightly Included Slightly Included Included



ADDITIONAL GRADING INFORMATION

Polish EXCELLENT
Symmetry EXCELLENT
Fluorescence SLIGHT

Inscription(s) IGI
Comments: This Laboratory Grown Diamond was created by Chemical Vapor Deposition (CVD) growth process. Indications of post-growth treatment.

Secondary color: Brown



October 28, 2025
IGI Report No PEAR BRILLIANT
13.19 X 8.54 X 5.20 MM
3.50 CARATS
FANCY INTENSE PINK
VVS 2
60.9%
63%
Medium to Slightly Thick (Faceted)
Pointed
EXCELLENT
EXCELLENT
SLIGHT
IGI
Comments: This Laboratory Grown Diamond was created by Chemical Vapor Deposition (CVD) growth process. Indications of post-growth treatment. Secondary color: Brown